

MLST8 Rabbit Polyclonal Antibody



CAB13599

Product Information

Size:

20uL, 50uL, 100uL, 200uL

Observed MW:

41kDa

Calculated MW:

23kDa/28kDa/35kDa

Applications:

WB IHC IF

Reactivity:

Human, Mouse, Rat

Antibody Information

Recommended dilutions:

WB 1:500 - 1:2000 IHC 1:50
- 1:200 IF 1:50 - 1:200

Source:

Rabbit

Isotype:

IgG

Purification:

Affinity purification

Protein Background

Immunogen information

Gene ID:

64223

Uniprot

Q9BVC4

Synonyms:

MLST8; GBL; GbetaL; LST8; POP3; WAT1

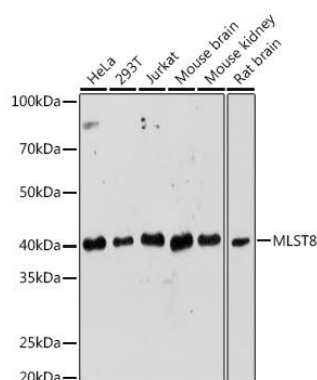
Immunogen:

Recombinant fusion protein containing a sequence corresponding to amino acids 1-326 of human MLST8 (NP_001186103.1).

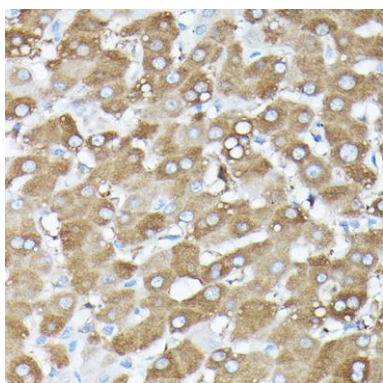
Storage:

Store at -20°C. Avoid freeze / thaw cycles. Buffer: PBS with 0.02% sodium azide, 50% glycerol, pH7.3.

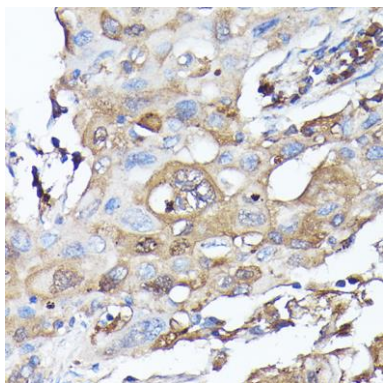
Product Images



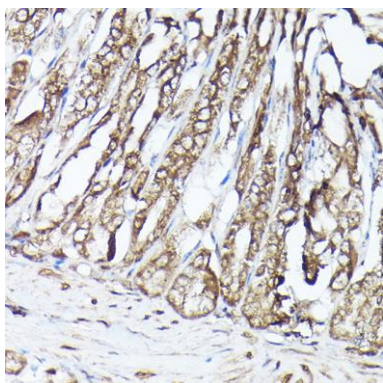
Western blot analysis of extracts of various cell lines, using MLST8 Rabbit pAb (CAB13599) at 1:1000 dilution. Secondary antibody: HRP Goat Anti-Rabbit IgG (H+L) (CABS014) at 1:10000 dilution. Lysates/proteins: 25ug per lane. Blocking buffer: 3% nonfat dry milk in TBST. Detection: ECL Enhanced Kit (CABM00021). Exposure time: 180s.



Immunohistochemistry of paraffin-embedded human liver using MLST8 Rabbit pAb (CAB13599) at dilution of 1:100 (40x lens).



Immunohistochemistry of paraffin-embedded human lung cancer using MLST8 Rabbit pAb (CAB13599) at dilution of 1:100 (40x lens).



Immunohistochemistry of paraffin-embedded mouse stomach using MLST8 Rabbit pAb (CAB13599) at dilution of 1:100 (40x lens).