

# KIF2B Rabbit Polyclonal Antibody



**CAB13600**

---

## Product Information

### Size:

20uL, 50uL, 100uL, 200uL

### Observed MW:

Refer to figures

### Calculated MW:

76kDa

### Applications:

WB IF

### Reactivity:

Human

## Antibody Information

### Recommended dilutions:

WB 1:500 - 1:2000 IF 1:50 - 1:200

### Source:

Rabbit

### Isotype:

IgG

### Purification:

Affinity purification

## Protein Background

### Immunogen information

#### Gene ID:

84643

#### Uniprot

Q8N4N8

#### Synonyms:

KIF2B

#### Immunogen:

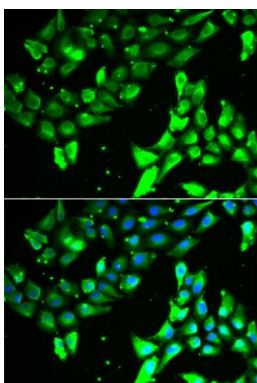
Recombinant fusion protein containing a sequence corresponding to amino acids 544-673 of human KIF2B (NP\_115948.4).

#### Storage:

Store at -20°C. Avoid freeze / thaw cycles. Buffer: PBS with 0.02% sodium azide, 50% glycerol, pH7.3.

## Product Images

---



Immunofluorescence analysis of A549 cells using KIF2B antibody (CAB13600). Blue: DAPI for nuclear staining.