

RFFL Rabbit Polyclonal Antibody



CAB13604

Product Information

Size:

20uL, 50uL, 100uL, 200uL

Observed MW:

Calculated MW:

36kDa/39kDa/40kDa

Applications:

IF

Reactivity:

Human

Antibody Information

Recommended dilutions:

IF 1:50 - 1:200

Source:

Rabbit

Isotype:

IgG

Purification:

Affinity purification

Protein Background

Immunogen information

Gene ID:

117584

Uniprot

Q8WZ73

Synonyms:

RFFL; CARP-2; CARP2; FRING; RIFIFYLIN; RNF189; RNF34L

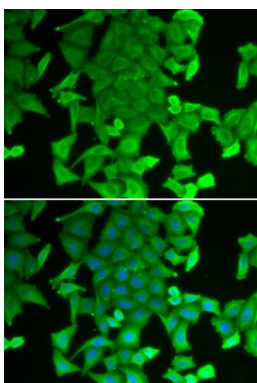
Immunogen:

Recombinant fusion protein containing a sequence corresponding to amino acids 1-190 of human RFFL (NP_001017368.1).

Storage:

Store at -20°C. Avoid freeze / thaw cycles. Buffer: PBS with 0.02% sodium azide, 50% glycerol, pH7.3.

Product Images



Immunofluorescence analysis of MCF-7 cells using RFFL antibody (CAB13604). Blue: DAPI for nuclear staining.