

# TICAM1 Rabbit Polyclonal Antibody



**CAB13605**

---

## Product Information

### Size:

20uL, 50uL, 100uL, 200uL

### Observed MW:

70kDa

### Calculated MW:

76kDa

### Applications:

WB IHC

### Reactivity:

Human, Mouse, Rat

## Protein Background

This gene encodes an adaptor protein containing a Toll/interleukin-1 receptor (TIR) homology domain, which is an intracellular signaling domain that mediates protein-protein interactions between the Toll-like receptors (TLRs) and signal-transduction components. This protein is involved in native immunity against invading pathogens. It specifically interacts with toll-like receptor 3, but not with other TLRs, and this association mediates dsRNA induction of interferon-beta through activation of nuclear factor kappa-B, during an antiviral immune response.

## Immunogen information

### Gene ID:

148022

### Uniprot

Q8IUC6

### Synonyms:

IIAE6; MyD88-3; PRVTIRB; TICAM-1; TRIF; TRIF/TICAM1; TICAM1

## Antibody Information

### Recommended dilutions:

WB 1:500 - 1:2000 IHC 1:50  
- 1:200

### Source:

Rabbit

### Isotype:

IgG

### Purification:

Affinity purification

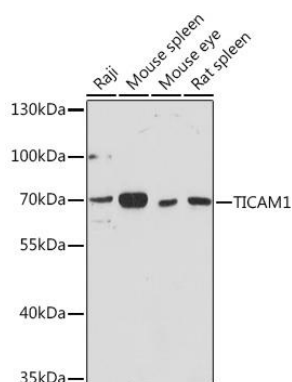
### Immunogen:

Recombinant fusion protein containing a sequence corresponding to amino acids 20-200 of human TICAM1 (NP\_891549.1).

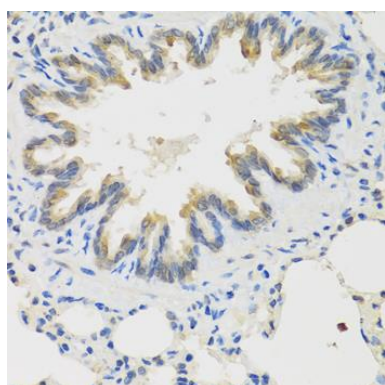
### Storage:

Store at -20°C. Avoid freeze / thaw cycles. Buffer: PBS with 0.02% sodium azide, 50% glycerol, pH7.3.

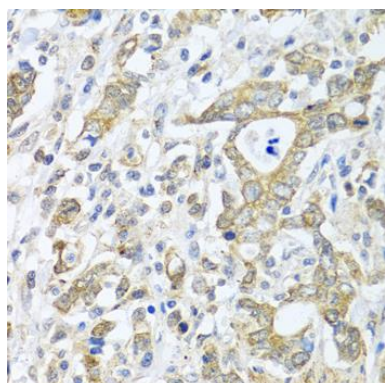
## Product Images



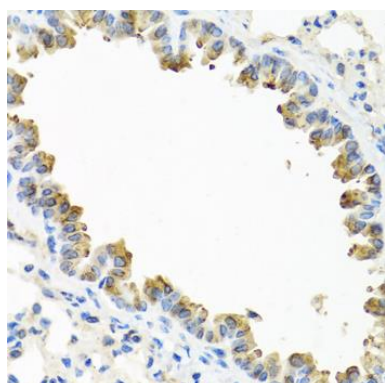
Western blot analysis of extracts of various cell lines, using TICAM1 Rabbit pAb (CAB13605) at 1:1000 dilution. Secondary antibody: HRP Goat Anti-Rabbit IgG (H+L) (CABS014) at 1:10000 dilution. Lysates/proteins: 25ug per lane. Blocking buffer: 3% nonfat dry milk in TBST. Detection: ECL Basic Kit (CABM00020). Exposure time: 90s.



Immunohistochemistry of paraffin-embedded rat lung using TICAM1 antibody (CAB13605) at dilution of 1:100 (40x lens).



Immunohistochemistry of paraffin-embedded human gastric cancer using TICAM1 antibody (CAB13605) at dilution of 1:100 (40x lens).



Immunohistochemistry of paraffin-embedded mouse lung using TICAM1 antibody (CAB13605) at dilution of 1:100 (40x lens).