

# Mitofusin 2 Rabbit Polyclonal Antibody



CAB13606

## Product Information

### Size:

20uL, 50uL, 100uL, 200uL

### Observed MW:

86kDa

### Calculated MW:

68kDa/86kDa

### Applications:

WB IHC

### Reactivity:

Human, Mouse, Rat

## Antibody Information

### Recommended dilutions:

WB 1:500 - 1:2000 IHC 1:50  
- 1:200

### Source:

Rabbit

### Isotype:

IgG

### Purification:

Affinity purification

## Protein Background

This gene encodes a mitochondrial membrane protein that participates in mitochondrial fusion and contributes to the maintenance and operation of the mitochondrial network. This protein is involved in the regulation of vascular smooth muscle cell proliferation, and it may play a role in the pathophysiology of obesity. Mutations in this gene cause Charcot-Marie-Tooth disease type 2A2, and hereditary motor and sensory neuropathy VI, which are both disorders of the peripheral nervous system. Defects in this gene have also been associated with early-onset stroke. Two transcript variants encoding the same protein have been identified.

## Immunogen information

### Gene ID:

170731

### Uniprot

### Synonyms:

MFN2; CMT2A; CMT2A2; CMT2A2A; CMT2A2B; CPRP1; HMSN6A;  
HSG; MARF; mitofusin-2

### Immunogen:

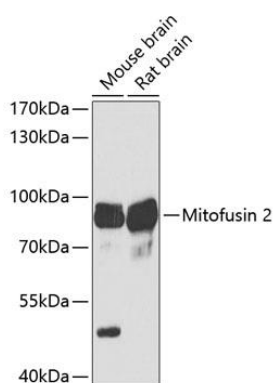
Recombinant fusion protein containing a sequence corresponding to amino acids 687-757 of mouse Mitofusin 2 (NP\_573464.2).

### Storage:

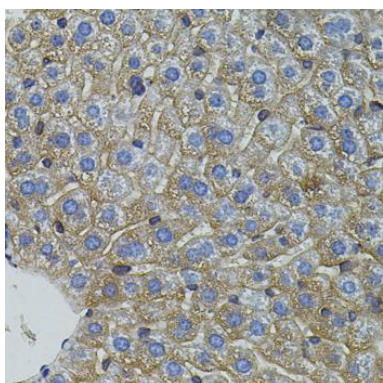
Store at -20°C. Avoid freeze / thaw cycles. Buffer: PBS with 0.02% sodium azide, 50% glycerol, pH7.3.

## Product Images

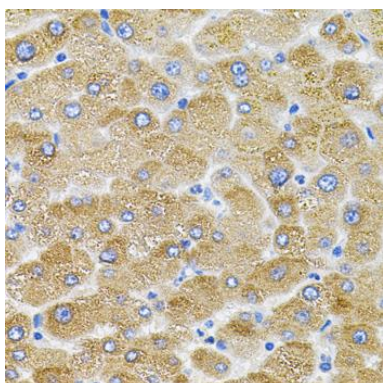
---



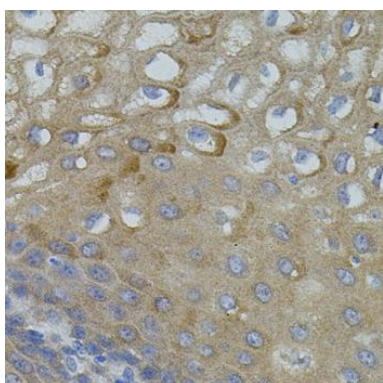
Western blot analysis of extracts of various cell lines, using Mitofusin 2 Antibody (CAB13606) at 1:1000 dilution. Secondary antibody: HRP Goat Anti-Rabbit IgG (H+L) (CABS014) at 1:10000 dilution. Lysates/proteins: 25ug per lane. Blocking buffer: 3% nonfat dry milk in TBST. Detection: ECL Basic Kit (CABM00020). Exposure time: 30s.



Immunohistochemistry of paraffin-embedded mouse liver using Mitofusin 2 antibody (CAB13606) (40x lens).



Immunohistochemistry of paraffin-embedded human liver damage using Mitofusin 2 antibody (CAB13606) (40x lens).



Immunohistochemistry of paraffin-embedded human esophagus using Mitofusin 2 antibody (CAB13606) (40x lens).