

# SERPINA6 Rabbit Polyclonal Antibody



CAB13609

---

## Product Information

### Size:

20uL, 50uL, 100uL, 200uL

### Observed MW:

43kDa

### Calculated MW:

45kDa

### Applications:

WB IHC

### Reactivity:

Human, Mouse, Rat

## Protein Background

This gene encodes an alpha-globulin protein with corticosteroid-binding properties. This is the major transport protein for glucocorticoids and progestins in the blood of most vertebrates. The gene localizes to a chromosomal region containing several closely related serine protease inhibitors which may have evolved by duplication events.

## Immunogen information

### Gene ID:

866

### Uniprot

P08185

### Synonyms:

SERPINA6; CBG

## Antibody Information

### Recommended dilutions:

WB 1:500 - 1:2000 IHC 1:50  
- 1:200

### Source:

Rabbit

### Isotype:

IgG

### Purification:

Affinity purification

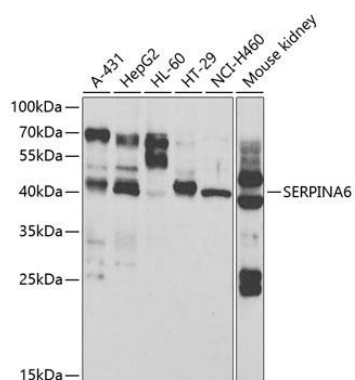
### Immunogen:

Recombinant fusion protein containing a sequence corresponding to amino acids 136-405 of human SERPINA6 (NP\_001747.2).

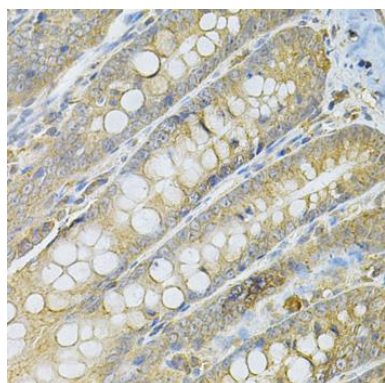
### Storage:

Store at -20°C. Avoid freeze / thaw cycles. Buffer: PBS with 0.02% sodium azide, 50% glycerol, pH7.3.

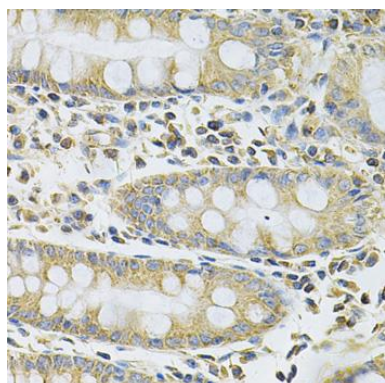
## Product Images



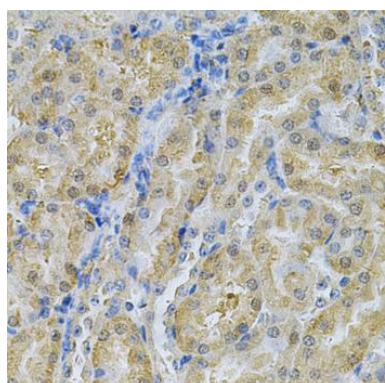
Western blot analysis of extracts of various cell lines, using SERPINA6 antibody (CAB13609) at 1:1000 dilution. Secondary antibody: HRP Goat Anti-Rabbit IgG (H+L) (CABS014) at 1:10000 dilution. Lysates/proteins: 25ug per lane. Blocking buffer: 3% nonfat dry milk in TBST. Detection: ECL Basic Kit (CABM00020).



Immunohistochemistry of paraffin-embedded rat intestine using SERPINA6 Antibody (CAB13609) at dilution of 1:100 (40x lens).



Immunohistochemistry of paraffin-embedded human colon using SERPINA6 Antibody (CAB13609) at dilution of 1:100 (40x lens).



Immunohistochemistry of paraffin-embedded mouse kidney using SERPINA6 Antibody (CAB13609) at dilution of 1:100 (40x lens).