

# Thymidine Kinase 1 Rabbit Monoclonal Antibody



CAB13612

---

## Product Information

### Size:

20uL, 50uL, 100uL, 200uL

### Observed MW:

26KDa

### Calculated MW:

25kDa

### Applications:

WB

### Reactivity:

Human

## Protein Background

The protein encoded by this gene is a cytosolic enzyme that catalyzes the addition of a gamma-phosphate group to thymidine. This creates dTMP and is the first step in the biosynthesis of dTTP, which is one component required for DNA replication. The encoded protein, whose levels fluctuate depending on the cell cycle stage, can act as a low activity dimer or a high activity tetramer. High levels of this protein have been used as a biomarker for diagnosing and categorizing many types of cancers. [provided by RefSeq, Oct 2016]

## Immunogen information

### Gene ID:

7083

### Uniprot

P04183

### Synonyms:

TK2

## Antibody Information

### Recommended dilutions:

WB 1:500 - 1:2000

### Source:

Rabbit

### Isotype:

IgG

### Purification:

Affinity purification

### Immunogen:

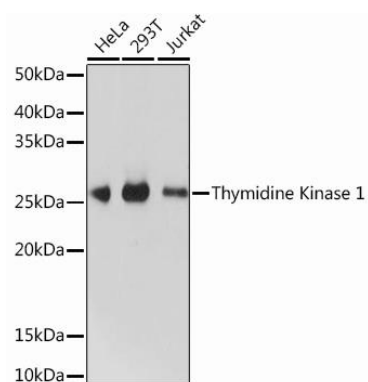
A synthesized peptide derived from human Thymidine Kinase 1

### Storage:

Store at -20°C. Avoid freeze / thaw cycles. Buffer: PBS with 0.02% sodium azide, 0.05% BSA, 50% glycerol, pH7.3.

## Product Images

---



Western blot - Thymidine Kinase 1 Rabbit mAb (CAB13612)