

IRF5 Rabbit Polyclonal Antibody



CAB13621

Product Information

Size:

20uL, 50uL, 100uL, 200uL

Observed MW:

56kDa

Calculated MW:

17kDa/47kDa/54kDa/56kDa/
57kDa

Applications:

WB IHC

Reactivity:

Human, Mouse, Rat

Antibody Information

Recommended dilutions:

WB 1:500 - 1:2000 IHC 1:50
- 1:200

Source:

Rabbit

Isotype:

IgG

Purification:

Affinity purification

Protein Background

This gene encodes a member of the interferon regulatory factor (IRF) family, a group of transcription factors with diverse roles, including virus-mediated activation of interferon, and modulation of cell growth, differentiation, apoptosis, and immune system activity. Members of the IRF family are characterized by a conserved N-terminal DNA-binding domain containing tryptophan (W) repeats. Alternative promoter use and alternative splicing result in multiple transcript variants, and a 30-nt indel polymorphism (SNP rs60344245) can result in loss of a 10-aa segment.

Immunogen information

Gene ID:

3663

Uniprot

Q13568

Synonyms:

IRF5; SLEB10

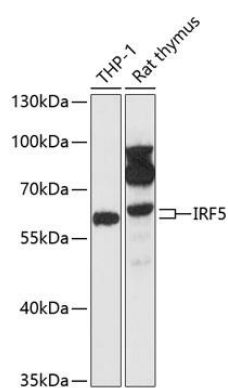
Immunogen:

Recombinant fusion protein containing a sequence corresponding to amino acids 1-200 of human IRF5 (NP_001092097.2).

Storage:

Store at -20°C. Avoid freeze / thaw cycles. Buffer: PBS with 0.02% sodium azide, 50% glycerol, pH7.3.

Product Images



Western blot analysis of extracts of various cell lines, using IRF5 antibody (CAB13621) at 1:1000 dilution. Secondary antibody: HRP Goat Anti-Rabbit IgG (H+L) (CABS014) at 1:10000 dilution. Lysates/proteins: 25ug per lane. Blocking buffer: 3% nonfat dry milk in TBST. Detection: ECL Enhanced Kit (CABM00021). Exposure time: 90s.