

# PRKCB Rabbit Polyclonal Antibody



CAB13628

## Product Information

### Size:

20uL, 50uL, 100uL, 200uL

### Observed MW:

80kDa

### Calculated MW:

76kDa/77kDa

### Applications:

WB IHC IF

### Reactivity:

Human, Mouse, Rat

## Antibody Information

### Recommended dilutions:

WB 1:500 - 1:2000 IHC 1:50  
- 1:100 IF 1:50 - 1:100

### Source:

Rabbit

### Isotype:

IgG

### Purification:

Affinity purification

## Protein Background

Protein kinase C (PKC) is a family of serine- and threonine-specific protein kinases that can be activated by calcium and second messenger diacylglycerol. PKC family members phosphorylate a wide variety of protein targets and are known to be involved in diverse cellular signaling pathways. PKC family members also serve as major receptors for phorbol esters, a class of tumor promoters. Each member of the PKC family has a specific expression profile and is believed to play a distinct role in cells. The protein encoded by this gene is one of the PKC family members. This protein kinase has been reported to be involved in many different cellular functions, such as B cell activation, apoptosis induction, endothelial cell proliferation, and intestinal sugar absorption. Studies in mice also suggest that this kinase may also regulate neuronal functions and correlate fear-induced conflict behavior after stress. Alternatively spliced transcript variants encoding distinct isoforms have been reported.

## Immunogen information

### Gene ID:

5579

### Uniprot

P05771

### Synonyms:

PRKCB; PKC-beta; PKCB; PRKCB1; PRKCB2

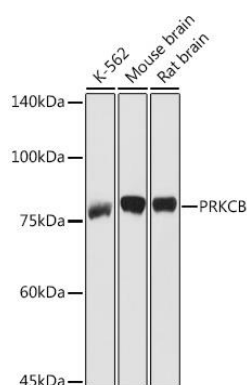
### Immunogen:

Recombinant fusion protein containing a sequence corresponding to amino acids 1-270 of human PRKCB (NP\_002729.2).

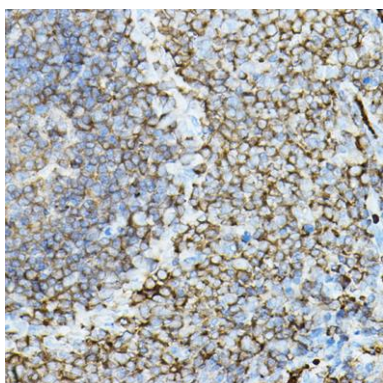
### Storage:

Store at -20°C. Avoid freeze / thaw cycles. Buffer: PBS with 0.02% sodium azide, 50% glycerol, pH7.3.

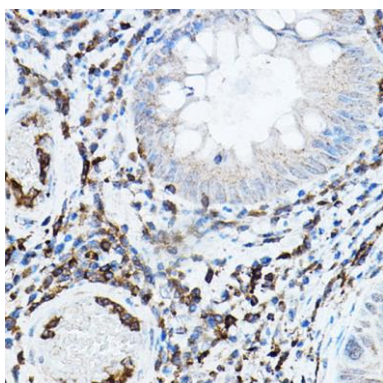
## Product Images



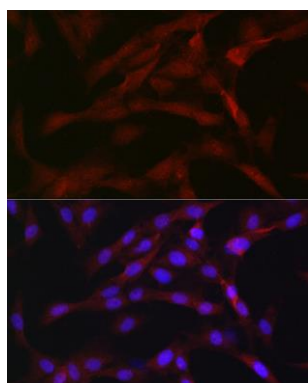
Western blot analysis of extracts of various cell lines, using PRKCB antibody (CAB13628) at 1:1000 dilution. Secondary antibody: HRP Goat Anti-Rabbit IgG (H+L) (CABS014) at 1:10000 dilution. Lysates/proteins: 25ug per lane. Blocking buffer: 3% nonfat dry milk in TBST. Detection: ECL Basic Kit (CABM00020). Exposure time: 10s.



Immunohistochemistry of paraffin-embedded rat spleen using PRKCB Rabbit pAb (CAB13628) at dilution of 1:50 (40x lens).



Immunohistochemistry of paraffin-embedded human colon carcinoma using PRKCB Rabbit pAb (CAB13628) at dilution of 1:50 (40x lens).



Immunofluorescence analysis of C6 cells using PRKCB Rabbit pAb (CAB13628) at dilution of 1:50 (40x lens). Blue: DAPI for nuclear staining.