

# KLK10 Rabbit Polyclonal Antibody



CAB13629

## Product Information

### Size:

20uL, 50uL, 100uL, 200uL

### Observed MW:

Refer to figures

### Calculated MW:

30kDa

### Applications:

WB IHC IF

### Reactivity:

Human, Mouse, Rat

## Protein Background

Kallikreins are a subgroup of serine proteases having diverse physiological functions. Growing evidence suggests that many kallikreins are implicated in carcinogenesis and some have potential as novel cancer and other disease biomarkers. This gene is one of the fifteen kallikrein subfamily members located in a cluster on chromosome 19. Its encoded protein is secreted and may play a role in suppression of tumorigenesis in breast and prostate cancers. Alternate splicing of this gene results in multiple transcript variants encoding the same protein.

## Immunogen information

### Gene ID:

5655

### Uniprot

O43240

### Synonyms:

KLK10; NES1; PRSSL1

## Antibody Information

### Recommended dilutions:

WB 1:500 - 1:2000 IHC 1:50  
- 1:200 IF 1:50 - 1:200

### Source:

Rabbit

### Isotype:

IgG

### Purification:

Affinity purification

### Immunogen:

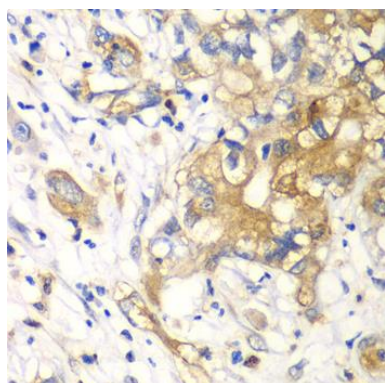
Recombinant fusion protein containing a sequence corresponding to amino acids 35-276 of human KLK10 (NP\_001070968.1).

### Storage:

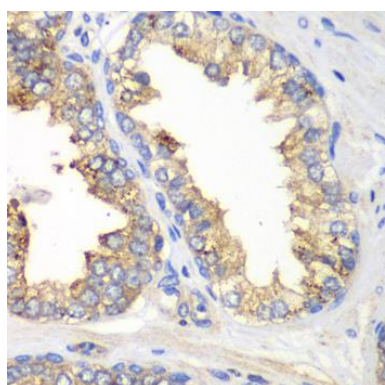
Store at -20°C. Avoid freeze / thaw cycles. Buffer: PBS with 0.02% sodium azide, 50% glycerol, pH7.3.

## Product Images

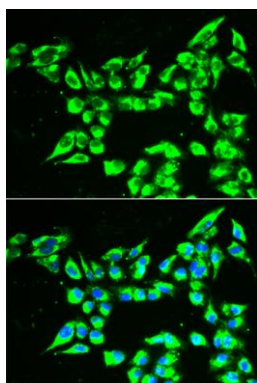
---



Immunohistochemistry of paraffin-embedded human liver cancer using KLK10 antibody (CAB13629) at dilution of 1:100 (40x lens).



Immunohistochemistry of paraffin-embedded human prostate using KLK10 antibody (CAB13629) at dilution of 1:100 (40x lens).



Immunofluorescence analysis of A549 cells using KLK10 antibody (CAB13629). Blue: DAPI for nuclear staining.