

# SSRP1 Rabbit Polyclonal Antibody



CAB13636

## Product Information

### Size:

20uL, 50uL, 100uL, 200uL

### Observed MW:

85kDa

### Calculated MW:

81kDa

### Applications:

WB IHC IF

### Reactivity:

Human

## Antibody Information

### Recommended dilutions:

WB 1:500 - 1:2000 IHC 1:50  
- 1:200 IF 1:50 - 1:200

### Source:

Rabbit

### Isotype:

IgG

### Purification:

Affinity purification

## Protein Background

The protein encoded by this gene is a subunit of a heterodimer that, along with SUPT16H, forms chromatin transcriptional elongation factor FACT. FACT interacts specifically with histones H2A/H2B to effect nucleosome disassembly and transcription elongation. FACT and cisplatin-damaged DNA may be crucial to the anticancer mechanism of cisplatin. This encoded protein contains a high mobility group box which most likely constitutes the structure recognition element for cisplatin-modified DNA. This protein also functions as a co-activator of the transcriptional activator p63. An alternatively spliced transcript variant of this gene has been described, but its full-length nature is not known.

## Immunogen information

### Gene ID:

6749

### Uniprot

Q08945

### Synonyms:

SSRP1; FACT; FACT80; T160

### Immunogen:

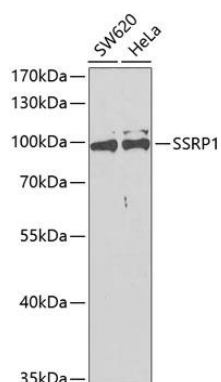
Recombinant fusion protein containing a sequence corresponding to amino acids 1-300 of human SSRP1 (NP\_003137.1).

### Storage:

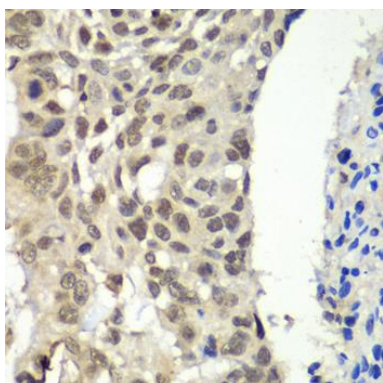
Store at -20°C. Avoid freeze / thaw cycles. Buffer: PBS with 0.02% sodium azide, 50% glycerol, pH7.3.

## Product Images

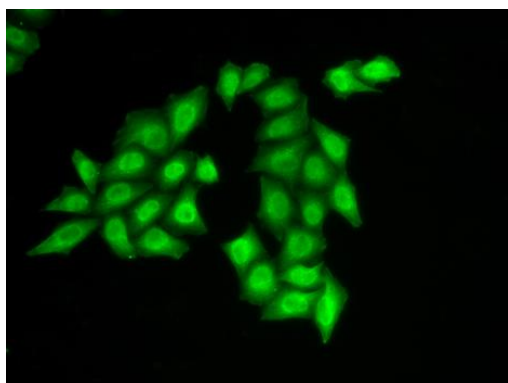
---



Western blot analysis of extracts of various cell lines, using SSRP1 antibody (CAB13636) at 1:1000 dilution. Secondary antibody: HRP Goat Anti-Rabbit IgG (H+L) (CABS014) at 1:10000 dilution. Lysates/proteins: 25ug per lane. Blocking buffer: 3% nonfat dry milk in TBST. Detection: ECL Enhanced Kit (CABM00021). Exposure time: 90s.



Immunohistochemistry of paraffin-embedded human esophageal cancer using SSRP1 antibody (CAB13636) at dilution of 1:100 (40x lens).



Immunofluorescence analysis of HeLa cells using SSRP1 antibody (CAB13636).