

XRCC2 Rabbit Polyclonal Antibody



CAB13639

Product Information

Size:

20uL, 50uL, 100uL, 200uL

Observed MW:

Refer to figures

Calculated MW:

31kDa

Applications:

IF

Reactivity:

Human

Protein Background

This gene encodes a member of the RecA/Rad51-related protein family that participates in homologous recombination to maintain chromosome stability and repair DNA damage. This gene is involved in the repair of DNA double-strand breaks by homologous recombination and it functionally complements Chinese hamster *irs1*, a repair-deficient mutant that exhibits hypersensitivity to a number of different DNA-damaging agents.

Immunogen information

Gene ID:

7516

Uniprot

O43543

Synonyms:

XRCC2; FANCU

Antibody Information

Recommended dilutions:

IF 1:50 - 1:200

Source:

Rabbit

Isotype:

IgG

Purification:

Affinity purification

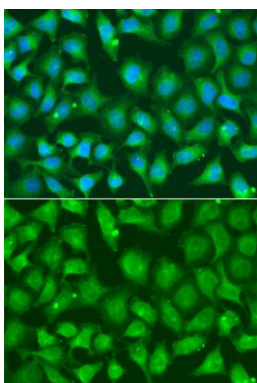
Immunogen:

Recombinant fusion protein containing a sequence corresponding to amino acids 1-280 of human XRCC2 (NP_005422.1).

Storage:

Store at -20°C. Avoid freeze / thaw cycles. Buffer: PBS with 0.02% sodium azide, 50% glycerol, pH7.3.

Product Images



Immunofluorescence analysis of A549 cells using XRCC2 antibody (CAB13639). Blue: DAPI for nuclear staining.