

TWF2 Rabbit Polyclonal Antibody



CAB13642

Product Information

Size:

20uL, 50uL, 100uL, 200uL

Observed MW:

40kDa

Calculated MW:

39kDa

Applications:

WB IHC IP

Reactivity:

Human, Mouse

Protein Background

The protein encoded by this gene was identified by its interaction with the catalytic domain of protein kinase C-zeta. The encoded protein contains an actin-binding site and an ATP-binding site. It is most closely related to twinfilin (PTK9), a conserved actin monomer-binding protein.

Immunogen information

Gene ID:

11344

Uniprot

Q6IBS0

Synonyms:

TWF2; A6RP; A6r; MSTP011; PTK9L

Antibody Information

Recommended dilutions:

WB 1:500 - 1:2000 IHC 1:50
- 1:200 IP 1:20 - 1:50

Source:

Rabbit

Isotype:

IgG

Purification:

Affinity purification

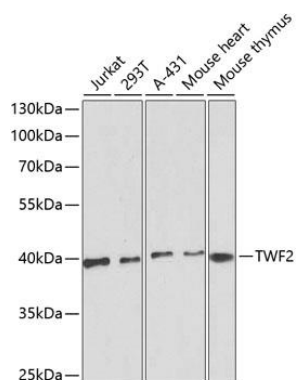
Immunogen:

Recombinant fusion protein containing a sequence corresponding to amino acids 1-369 of human TWF2 (NP_009215.1).

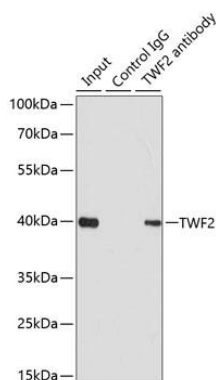
Storage:

Store at -20°C. Avoid freeze / thaw cycles. Buffer: PBS with 0.02% sodium azide, 50% glycerol, pH7.3.

Product Images



Western blot analysis of extracts of various cell lines, using TWF2 antibody (CAB13642) at 1:1000 dilution. Secondary antibody: HRP Goat Anti-Rabbit IgG (H+L) (CABS014) at 1:10000 dilution. Lysates/proteins: 25ug per lane. Blocking buffer: 3% nonfat dry milk in TBST. Detection: ECL Basic Kit (CABM00020). Exposure time: 180s.



Immunoprecipitation analysis of 200ug extracts of 293T cells using 1ug TWF2 antibody (CAB13642). Western blot was performed from the immunoprecipitate using TWF2 antibody (CAB13642) at a dilution of 1:1000.