

C11orf30 Rabbit Polyclonal Antibody



CAB13643

Product Information

Size:

20uL, 50uL, 100uL, 200uL

Observed MW:

Refer to figures

Calculated MW:

9kDa/123kDa/131kDa/141kDa/143kDa

Applications:

WB IF

Reactivity:

Human, Mouse, Rat

Antibody Information

Recommended dilutions:

WB 1:500 - 1:2000 IF 1:50 - 1:200

Source:

Rabbit

Isotype:

IgG

Purification:

Affinity purification

Protein Background

Immunogen information

Gene ID:

56946

Uniprot

Q7Z589

Synonyms:

EMSY; C11orf30; GL002

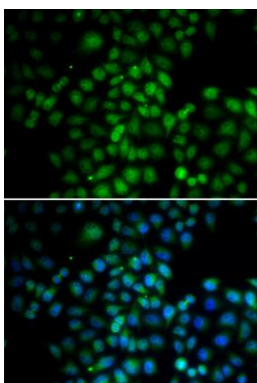
Immunogen:

Recombinant fusion protein containing a sequence corresponding to amino acids 1153-1322 of human C11orf30 (NP_064578.2).

Storage:

Store at -20°C. Avoid freeze / thaw cycles. Buffer: PBS with 0.02% sodium azide, 50% glycerol, pH7.3.

Product Images



Immunofluorescence analysis of HeLa cells using C11orf30 antibody (CAB13643). Blue: DAPI for nuclear staining.