

IFIH1 Rabbit Polyclonal Antibody



CAB13645

Product Information

Size:

20uL, 50uL, 100uL, 200uL

Observed MW:

140KDa

Calculated MW:

25kDa/116kDa

Applications:

WB IF

Reactivity:

Human, Mouse

Antibody Information

Recommended dilutions:

WB 1:500 - 1:2000 IF 1:50 - 1:200

Source:

Rabbit

Isotype:

IgG

Purification:

Affinity purification

Protein Background

DEAD box proteins, characterized by the conserved motif Asp-Glu-Ala-Asp (DEAD), are putative RNA helicases. They are implicated in a number of cellular processes involving alteration of RNA secondary structure such as translation initiation, nuclear and mitochondrial splicing, and ribosome and spliceosome assembly. Based on their distribution patterns, some members of this family are believed to be involved in embryogenesis, spermatogenesis, and cellular growth and division. This gene encodes a DEAD box protein that is upregulated in response to treatment with beta-interferon and a protein kinase C-activating compound, mezerein. Irreversible reprogramming of melanomas can be achieved by treatment with both these agents; treatment with either agent alone only achieves reversible differentiation. Genetic variation in this gene is associated with diabetes mellitus insulin-dependent type 19.

Immunogen information

Gene ID:

64135

Uniprot

Q9BYX4

Synonyms:

IFIH1; AGS7; Hlcd; IDDM19; MDA-5; MDA5; RLR-2; SGMRT1

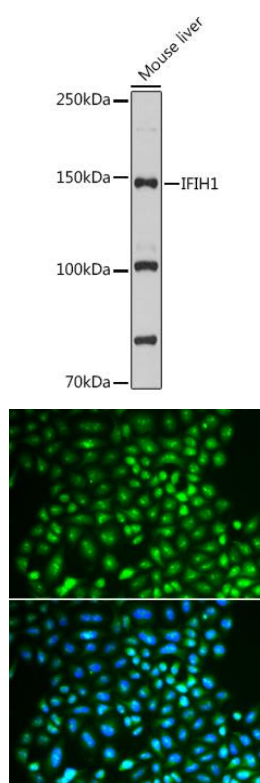
Immunogen:

Recombinant fusion protein containing a sequence corresponding to amino acids 1-205 of human IFIH1 (NP_071451.2).

Storage:

Store at -20°C. Avoid freeze / thaw cycles. Buffer: PBS with 0.02% sodium azide, 50% glycerol, pH7.3.

Product Images



Western blot analysis of extracts of Mouse liver, using IFIH1 antibody (CAB13645) at 1:1000 dilution. Secondary antibody: HRP Goat Anti-Rabbit IgG (H+L) (CABS014) at 1:10000 dilution. Lysates/proteins: 25ug per lane. Blocking buffer: 3% nonfat dry milk in TBST. Detection: ECL Basic Kit (CABM00020). Exposure time: 10s.

Immunofluorescence analysis of A549 cells using IFIH1 antibody (CAB13645). Blue: DAPI for nuclear staining.