

# INTS5 Rabbit Polyclonal Antibody



CAB13646

## Product Information

### Size:

20uL, 50uL, 100uL, 200uL

### Observed MW:

120kDa

### Calculated MW:

107kDa

### Applications:

WB IHC

### Reactivity:

Human, Mouse

## Protein Background

The Integrator complex is a complex that associates with the C-terminal domain of RNA polymerase II large subunit. This complex is brought to U1 and U2 small nuclear RNA genes, where it is involved in the transcription and processing of their transcripts. The protein encoded by this gene represents a subunit of the Integrator complex.

## Immunogen information

### Gene ID:

80789

### Uniprot

Q6P9B9

### Synonyms:

INTS5; INT5; KIAA1698

## Antibody Information

### Recommended dilutions:

WB 1:500 - 1:2000 IHC 1:50  
- 1:200

### Source:

Rabbit

### Isotype:

IgG

### Purification:

Affinity purification

### Immunogen:

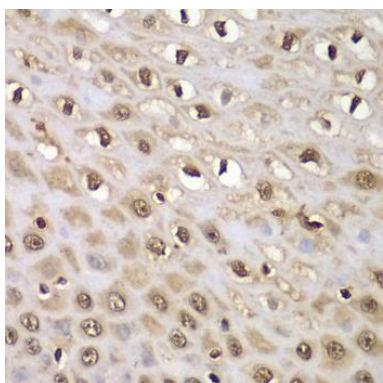
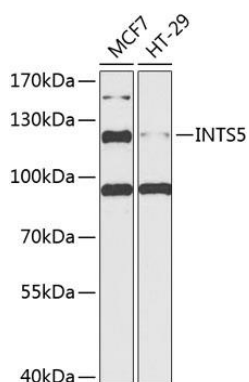
Recombinant fusion protein containing a sequence corresponding to amino acids 120-400 of human INTS5 (NP\_085131.1).

### Storage:

Store at -20°C. Avoid freeze / thaw cycles. Buffer: PBS with 0.02% sodium azide, 50% glycerol, pH7.3.

## Product Images

---



Western blot analysis of extracts of various cell lines, using INTS5 antibody (CAB13646) at 1:1000 dilution. Secondary antibody: HRP Goat Anti-Rabbit IgG (H+L) (CABS014) at 1:10000 dilution. Lysates/proteins: 25ug per lane. Blocking buffer: 3% nonfat dry milk in TBST. Detection: ECL Basic Kit (CABM00020). Exposure time: 90s.

Immunohistochemistry of paraffin-embedded human esophagus using INTS5 antibody (CAB13646) at dilution of 1:100 (40x lens).