

HDGF Rabbit Polyclonal Antibody



CAB13654

Product Information

Size:

20uL, 50uL, 100uL, 200uL

Observed MW:

37kDa

Calculated MW:

25kDa/26kDa/28kDa

Applications:

WB IHC IF

Reactivity:

Human

Protein Background

This gene encodes a member of the hepatoma-derived growth factor family. The encoded protein has mitogenic and DNA-binding activity and may play a role in cellular proliferation and differentiation. High levels of expression of this gene enhance the growth of many tumors. This gene was thought initially to be located on chromosome X; however, that location has been determined to correspond to a related pseudogene. Alternatively spliced transcript variants encoding distinct isoforms have been described.

Immunogen information

Gene ID:

3068

Uniprot

P51858

Synonyms:

HDGF; HMG1L2

Antibody Information

Recommended dilutions:

WB 1:500 - 1:2000 IHC 1:50
- 1:200 IF 1:50 - 1:200

Source:

Rabbit

Isotype:

IgG

Purification:

Affinity purification

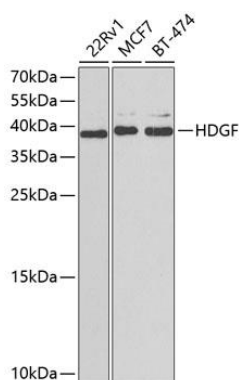
Immunogen:

Recombinant fusion protein containing a sequence corresponding to amino acids 1-240 of human HDGF (NP_004485.1).

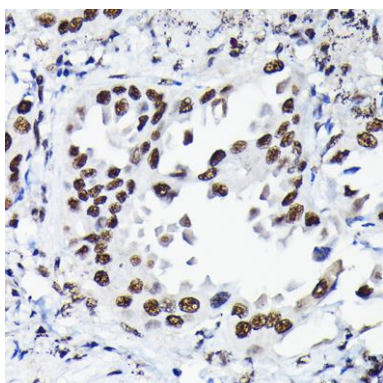
Storage:

Store at -20°C. Avoid freeze / thaw cycles. Buffer: PBS with 0.02% sodium azide, 50% glycerol, pH7.3.

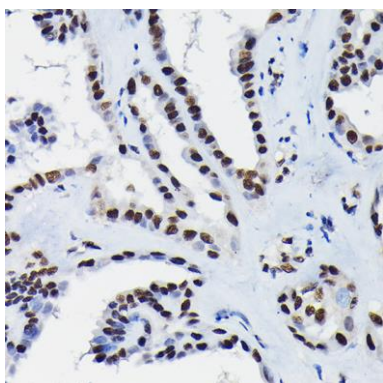
Product Images



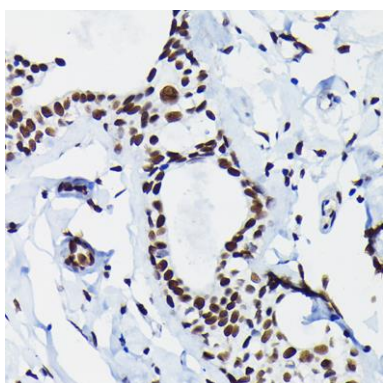
Western blot analysis of extracts of various cell lines, using HDGF antibody (CAB13654) at 1:1000 dilution. Secondary antibody: HRP Goat Anti-Rabbit IgG (H+L) (CABS014) at 1:10000 dilution. Lysates/proteins: 25ug per lane. Blocking buffer: 3% nonfat dry milk in TBST. Detection: ECL Basic Kit (CABM00020). Exposure time: 90s.



Immunohistochemistry of paraffin-embedded human lung cancer using HDGF Rabbit pAb (CAB13654) at dilution of 1:50 (40x lens).



Immunohistochemistry of paraffin-embedded human thyroid cancer using HDGF Rabbit pAb (CAB13654) at dilution of 1:50 (40x lens).



Immunohistochemistry of paraffin-embedded human breast cancer using HDGF Rabbit pAb (CAB13654) at dilution of 1:50 (40x lens).