

# Ceruloplasmin Rabbit Polyclonal Antibody



CAB13660

## Product Information

### Size:

20uL, 50uL, 100uL, 200uL

### Observed MW:

### Calculated MW:

122kDa

### Applications:

IF

### Reactivity:

Human, Mouse, Rat

## Antibody Information

### Recommended dilutions:

IF 1:50 - 1:200

### Source:

Rabbit

### Isotype:

IgG

### Purification:

Affinity purification

## Protein Background

The protein encoded by this gene is a metalloprotein that binds most of the copper in plasma and is involved in the peroxidation of Fe(II)transferrin to Fe(III) transferrin. Mutations in this gene cause aceruloplasminemia, which results in iron accumulation and tissue damage, and is associated with diabetes and neurologic abnormalities. Two transcript variants, one protein-coding and the other not protein-coding, have been found for this gene.

## Immunogen information

### Gene ID:

1356

### Uniprot

P00450

### Synonyms:

CP; CP-2

### Immunogen:

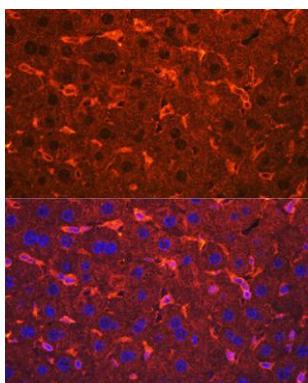
Recombinant fusion protein containing a sequence corresponding to amino acids 20-300 of human Ceruloplasmin (NP\_000087.1).

### Storage:

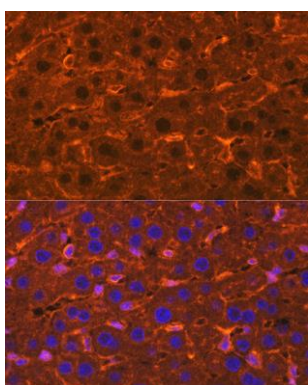
Store at -20°C. Avoid freeze / thaw cycles. Buffer: PBS with 0.02% sodium azide, 50% glycerol, pH7.3.

## Product Images

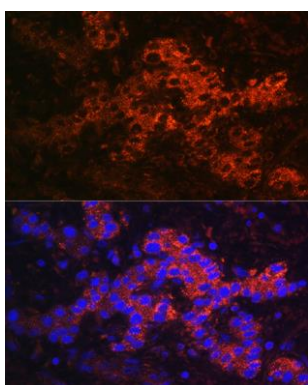
---



Immunofluorescence analysis of Mouse liver using Ceruloplasmin Rabbit pAb (CAB13660) at dilution of 1:100. Blue: DAPI for nuclear staining.



Immunofluorescence analysis of Rat liver using Ceruloplasmin Rabbit pAb (CAB13660) at dilution of 1:100. Blue: DAPI for nuclear staining.



Immunofluorescence analysis of Human liver cancer using Ceruloplasmin Rabbit pAb (CAB13660) at dilution of 1:100. Blue: DAPI for nuclear staining.