

# LAMB3 Rabbit Polyclonal Antibody



CAB13663

## Product Information

### Size:

20uL, 50uL, 100uL, 200uL

### Observed MW:

131kDa

### Calculated MW:

129kDa

### Applications:

WB

### Reactivity:

Rat

## Protein Background

The product encoded by this gene is a laminin that belongs to a family of basement membrane proteins. This protein is a beta subunit laminin, which together with an alpha and a gamma subunit, forms laminin-5. Mutations in this gene cause epidermolysis bullosa junctional Herlitz type, and generalized atrophic benign epidermolysis bullosa, diseases that are characterized by blistering of the skin. Multiple alternatively spliced transcript variants that encode the same protein have been found for this gene.

## Immunogen information

### Gene ID:

3914

### Uniprot

Q13751

### Synonyms:

LAMB3; AI1A; BM600-125KDA; LAM5; LAMNB1

## Antibody Information

### Recommended dilutions:

WB 1:500 - 1:2000

### Source:

Rabbit

### Isotype:

IgG

### Purification:

Affinity purification

### Immunogen:

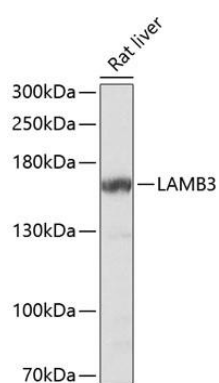
Recombinant fusion protein containing a sequence corresponding to amino acids 18-230 of human LAMB3 (NP\_000219.2).

### Storage:

Store at -20°C. Avoid freeze / thaw cycles. Buffer: PBS with 0.02% sodium azide, 50% glycerol, pH7.3.

## Product Images

---



Western blot analysis of extracts of rat liver, using LAMB3 Antibody (CAB13663) at 1:1000 dilution. Secondary antibody: HRP Goat Anti-Rabbit IgG (H+L) (CABS014) at 1:10000 dilution. Lysates/proteins: 25ug per lane. Blocking buffer: 3% nonfat dry milk in TBST. Detection: ECL Basic Kit (CABM00020). Exposure time: 90s.