

# PMS2 Rabbit Polyclonal Antibody



CAB13680

## Product Information

### Size:

20uL, 50uL, 100uL, 200uL

### Observed MW:

120kDa

### Calculated MW:

20kDa/51kDa/62kDa/95kDa

### Applications:

WB IF IP

### Reactivity:

Human

## Antibody Information

### Recommended dilutions:

WB 1:500 - 1:2000 IF 1:50 -  
1:200 IP 1:20 - 1:50

### Source:

Rabbit

### Isotype:

IgG

### Purification:

Affinity purification

## Protein Background

The protein encoded by this gene is a key component of the mismatch repair system that functions to correct DNA mismatches and small insertions and deletions that can occur during DNA replication and homologous recombination. This protein forms heterodimers with the gene product of the mutL homolog 1 (MLH1) gene to form the MutL-alpha heterodimer. The MutL-alpha heterodimer possesses an endonucleolytic activity that is activated following recognition of mismatches and insertion/deletion loops by the MutS-alpha and MutS-beta heterodimers, and is necessary for removal of the mismatched DNA. There is a DQHA(X)2E(X)4E motif found at the C-terminus of the protein encoded by this gene that forms part of the active site of the nuclease. Mutations in this gene have been associated with hereditary nonpolyposis colorectal cancer (HNPCC; also known as Lynch syndrome) and Turcot syndrome.

## Immunogen information

### Gene ID:

5395

### Uniprot

P54278

### Synonyms:

PMS2; HNPCC4; MLH4; PMS2CL; PMSL2

### Immunogen:

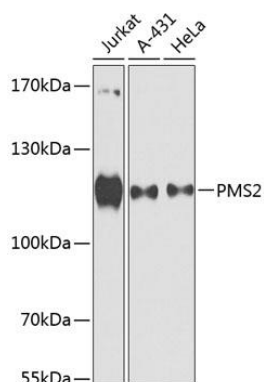
Recombinant fusion protein containing a sequence corresponding to amino acids 390-670 of human PMS2 (NP\_000526.2).

### Storage:

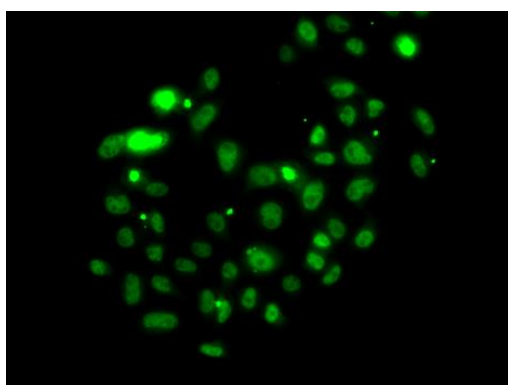
Store at -20°C. Avoid freeze / thaw cycles. Buffer: PBS with 0.02% sodium azide, 50% glycerol, pH7.3.

## Product Images

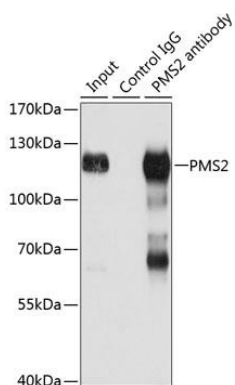
---



Western blot analysis of extracts of various cell lines, using PMS2 antibody (CAB13680) at 1:1000 dilution. Secondary antibody: HRP Goat Anti-Rabbit IgG (H+L) (CABS014) at 1:10000 dilution. Lysates/proteins: 25ug per lane. Blocking buffer: 3% nonfat dry milk in TBST. Detection: ECL Basic Kit (CABM00020). Exposure time: 90s.



Immunofluorescence analysis of U2OS cells using PMS2 antibody (CAB13680).



Immunoprecipitation analysis of 150ug extracts of Jurkat cells using 3ug PMS2 antibody (CAB13680). Western blot was performed from the immunoprecipitate using PMS2 antibody (CAB13680) at a dilution of 1:500.