

# HSPB1 Rabbit Polyclonal Antibody



CAB13681

---

## Product Information

### Size:

20uL, 50uL, 100uL, 200uL

### Observed MW:

### Calculated MW:

22kDa

### Applications:

WB IF

### Reactivity:

Human

## Antibody Information

### Recommended dilutions:

WB 1:500 - 1:2000 IF 1:50 - 1:200

### Source:

Rabbit

### Isotype:

IgG

### Purification:

Affinity purification

## Protein Background

The protein encoded by this gene is induced by environmental stress and developmental changes. The encoded protein is involved in stress resistance and actin organization and translocates from the cytoplasm to the nucleus upon stress induction. Defects in this gene are a cause of Charcot-Marie-Tooth disease type 2F (CMT2F) and distal hereditary motor neuropathy (dHMN).

## Immunogen information

### Gene ID:

3315

### Uniprot

P04792

### Synonyms:

HSPB1; CMT2F; HEL-S-102; HMN2B; HS.76067; HSP27; HSP28; Hsp25; SRP27

### Immunogen:

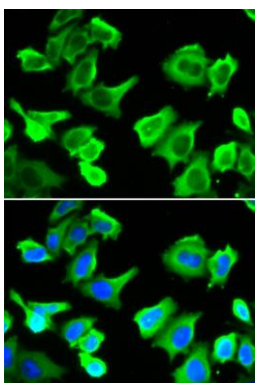
Recombinant fusion protein containing a sequence corresponding to amino acids 1-100 of human HSPB1 (NP\_001531.1).

### Storage:

Store at -20°C. Avoid freeze / thaw cycles. Buffer: PBS with 0.02% sodium azide, 50% glycerol, pH7.3.

## Product Images

---



Immunofluorescence analysis of A549 cells using HSPB1 antibody (CAB13681). Blue: DAPI for nuclear staining.