

# NR5A2 Rabbit Polyclonal Antibody



CAB13688

## Product Information

### Size:

20uL, 50uL, 100uL, 200uL

### Observed MW:

61kDa

### Calculated MW:

42kDa/53kDa/56kDa/61kDa

### Applications:

WB IHC IF

### Reactivity:

Human, Mouse, Rat

## Antibody Information

### Recommended dilutions:

WB 1:500 - 1:2000 IHC 1:50  
- 1:200 IF 1:50 - 1:200

### Source:

Rabbit

### Isotype:

IgG

### Purification:

Affinity purification

## Protein Background

The protein encoded by this gene is a DNA-binding zinc finger transcription factor and is a member of the fushi tarazu factor-1 subfamily of orphan nuclear receptors. The encoded protein is involved in the expression of genes for hepatitis B virus and cholesterol biosynthesis, and may be an important regulator of embryonic development.

## Immunogen information

### Gene ID:

2494

### Uniprot

O00482

### Synonyms:

NR5A2; B1F; B1F2; CPF; FTF; FTZ-F1; FTZ-F1beta; LRH-1; LRH1;  
hB1F-2

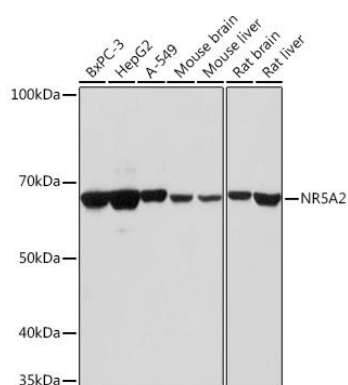
### Immunogen:

Recombinant fusion protein containing a sequence corresponding to amino acids 1-140 of human NR5A2 (NP\_003813.1).

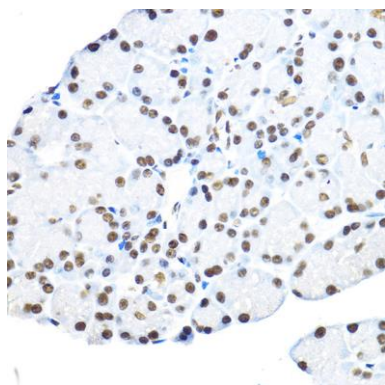
### Storage:

Store at -20°C. Avoid freeze / thaw cycles. Buffer: PBS with 0.02% sodium azide, 50% glycerol, pH7.3.

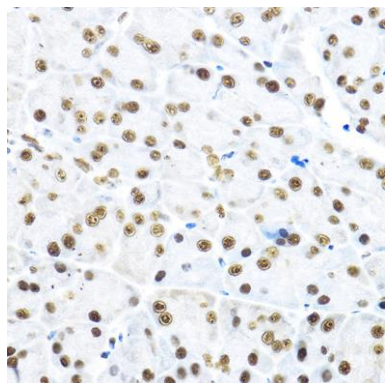
## Product Images



Western blot analysis of extracts of various cell lines, using NR5A2 antibody (CAB13688) at 1:1000 dilution. Secondary antibody: HRP Goat Anti-Rabbit IgG (H+L) (CABS014) at 1:10000 dilution. Lysates/proteins: 25ug per lane. Blocking buffer: 3% nonfat dry milk in TBST. Detection: ECL Basic Kit (CABM00020). Exposure time: 30s.



Immunohistochemistry of paraffin-embedded rat pancreas using NR5A2 Rabbit pAb (CAB13688) at dilution of 1:100 (40x lens).



Immunohistochemistry of paraffin-embedded mouse pancreas using NR5A2 Rabbit pAb (CAB13688) at dilution of 1:100 (40x lens).