

# RPL30 Rabbit Polyclonal Antibody



CAB13690

## Product Information

### Size:

20uL, 50uL, 100uL, 200uL

### Observed MW:

13kDa

### Calculated MW:

12kDa

### Applications:

WB IHC IF

### Reactivity:

Human, Mouse, Rat

## Antibody Information

### Recommended dilutions:

WB 1:500 - 1:2000 IHC 1:50  
- 1:100 IF 1:50 - 1:100

### Source:

Rabbit

### Isotype:

IgG

### Purification:

Affinity purification

## Protein Background

Ribosomes, the organelles that catalyze protein synthesis, consist of a small 40S subunit and a large 60S subunit. Together these subunits are composed of 4 RNA species and approximately 80 structurally distinct proteins. This gene encodes a ribosomal protein that is a component of the 60S subunit. The protein belongs to the L30E family of ribosomal proteins. It is located in the cytoplasm. This gene is co-transcribed with the U72 small nucleolar RNA gene, which is located in its fourth intron. As is typical for genes encoding ribosomal proteins, there are multiple processed pseudogenes of this gene dispersed through the genome.

## Immunogen information

### Gene ID:

6156

### Uniprot

P62888

### Synonyms:

RPL30; L30

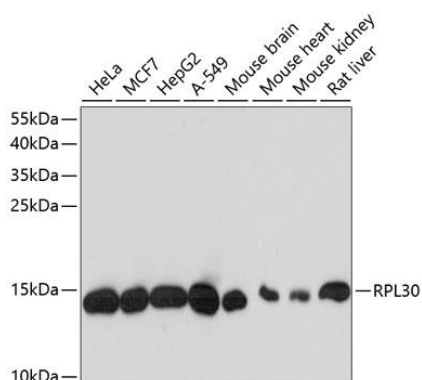
### Immunogen:

Recombinant fusion protein containing a sequence corresponding to amino acids 1-115 of human RPL30 (NP\_000980.1).

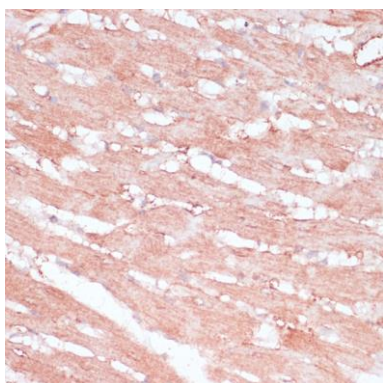
### Storage:

Store at -20°C. Avoid freeze / thaw cycles. Buffer: PBS with 0.02% sodium azide, 50% glycerol, pH7.3.

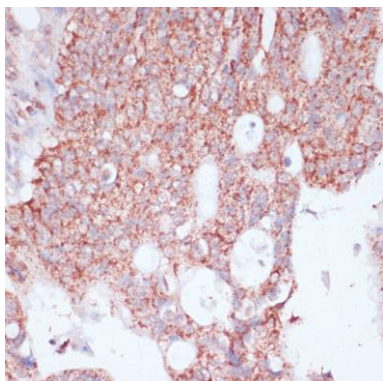
## Product Images



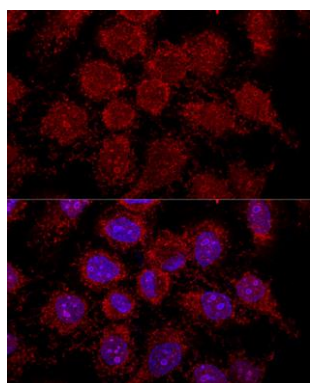
Western blot analysis of extracts of various cell lines, using RPL30 antibody (CAB13690) at 1:3000 dilution. Secondary antibody: HRP Goat Anti-Rabbit IgG (H+L) (CABS014) at 1:10000 dilution. Lysates/proteins: 25ug per lane. Blocking buffer: 3% nonfat dry milk in TBST. Detection: ECL Basic Kit (CABM00020). Exposure time: 10s.



Immunohistochemistry of paraffin-embedded rat heart using RPL30 antibody (CAB13690) at dilution of 1:100 (40x lens).



Immunohistochemistry of paraffin-embedded human colon carcinoma using RPL30 antibody (CAB13690) at dilution of 1:100 (40x lens).



Confocal immunofluorescence analysis of HeLa cells using RPL30 antibody (CAB13690) at dilution of 1:200. Blue: DAPI for nuclear staining.