

# NOP16 Rabbit Polyclonal Antibody



CAB13697

---

## Product Information

### Size:

20uL, 50uL, 100uL, 200uL

### Observed MW:

21kDa

### Calculated MW:

21kDa/26kDa/27kDa

### Applications:

WB

### Reactivity:

Human, Mouse

## Protein Background

This gene encodes a protein that is localized to the nucleolus. Expression of this gene is induced by estrogens and Myc protein and is a marker of poor patient survival in breast cancer. Alternative splicing results in multiple transcript variants.

## Immunogen information

### Gene ID:

51491

### Uniprot

Q9Y3C1

### Synonyms:

NOP16; HSPC111; HSPC185

## Antibody Information

### Recommended dilutions:

WB 1:500 - 1:2000

### Source:

Rabbit

### Isotype:

IgG

### Purification:

Affinity purification

### Immunogen:

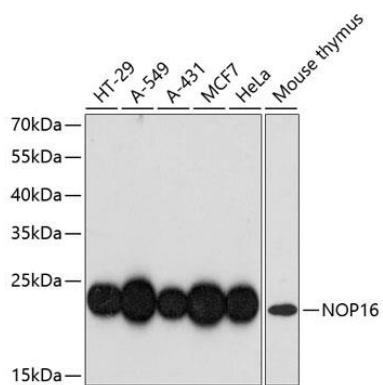
Recombinant fusion protein containing a sequence corresponding to amino acids 1-178 of human NOP16 (NP\_057475.2).

### Storage:

Store at -20°C. Avoid freeze / thaw cycles. Buffer: PBS with 0.02% sodium azide, 50% glycerol, pH7.3.

## Product Images

---



Western blot analysis of extracts of various cell lines, using NOP16 antibody (CAB13697) at 1:3000 dilution. Secondary antibody: HRP Goat Anti-Rabbit IgG (H+L) (CABS014) at 1:10000 dilution. Lysates/proteins: 25ug per lane. Blocking buffer: 3% nonfat dry milk in TBST. Detection: ECL Enhanced Kit (CABM00021). Exposure time: 90s.