

SARNP Rabbit Polyclonal Antibody



CAB13701

Product Information

Size:

20uL, 50uL, 100uL, 200uL

Observed MW:

29kDa

Calculated MW:

23kDa

Applications:

WB IHC IF

Reactivity:

Human

Antibody Information

Recommended dilutions:

WB 1:500 - 1:2000 IHC 1:50
- 1:200 IF 1:50 - 1:200

Source:

Rabbit

Isotype:

IgG

Purification:

Affinity purification

Protein Background

This gene encodes a protein that is upregulated in response to various cytokines. The encoded protein may play a role in cell cycle progression. A translocation between this gene and the myeloid/lymphoid leukemia gene, resulting in expression of a chimeric protein, has been associated with acute myelomonocytic leukemia. Pseudogenes exist on chromosomes 7 and 8. Alternatively spliced transcript variants have been described.

Immunogen information

Gene ID:

84324

Uniprot

P82979

Synonyms:

SARNP; CIP29; HCC1; HSPC316; THO1

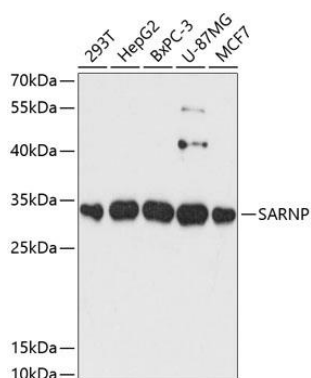
Immunogen:

Recombinant fusion protein containing a sequence corresponding to amino acids 1-210 of human SARNP (NP_149073.1).

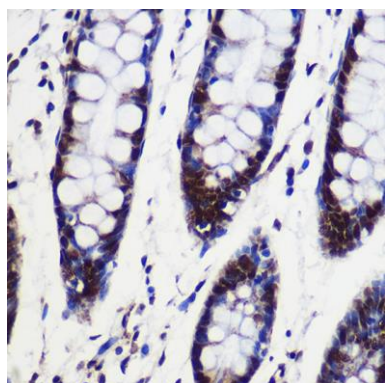
Storage:

Store at -20°C. Avoid freeze / thaw cycles. Buffer: PBS with 0.02% sodium azide, 50% glycerol, pH7.3.

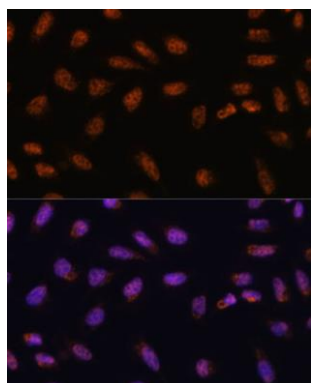
Product Images



Western blot analysis of extracts of various cell lines, using SARNP antibody (CAB13701) at 1:3000 dilution. Secondary antibody: HRP Goat Anti-Rabbit IgG (H+L) (CABS014) at 1:10000 dilution. Lysates/proteins: 25ug per lane. Blocking buffer: 3% nonfat dry milk in TBST. Detection: ECL Enhanced Kit (CABM00021). Exposure time: 90s.



Immunohistochemistry of paraffin-embedded Human colon using SARNP Rabbit pAb (CAB13701) at dilution of 1:100 (40x lens).



Immunofluorescence analysis of U-2 OS cells using SARNP antibody (CAB13701) at dilution of 1:100. Blue: DAPI for nuclear staining.