

# CABP7 Rabbit Polyclonal Antibody



CAB13703

---

## Product Information

### Size:

20uL, 50uL, 100uL, 200uL

### Observed MW:

30kDa

### Calculated MW:

24kDa

### Applications:

WB IHC

### Reactivity:

Human, Mouse, Rat

## Antibody Information

### Recommended dilutions:

WB 1:500 - 1:2000 IHC 1:50  
- 1:100

### Source:

Rabbit

### Isotype:

IgG

### Purification:

Affinity purification

## Protein Background

### Immunogen information

#### Gene ID:

164633

#### Uniprot

Q86V35

#### Synonyms:

CABP7; CALN2

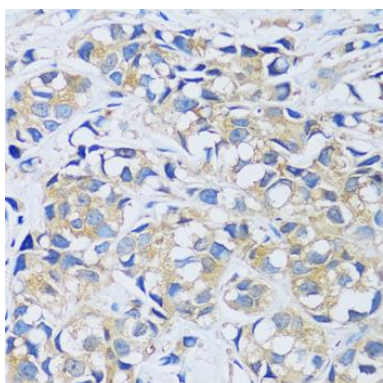
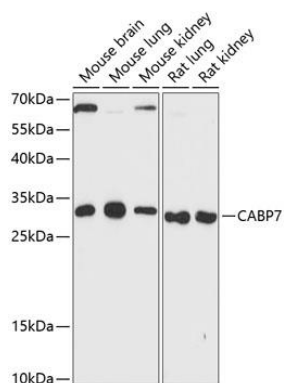
#### Immunogen:

Recombinant fusion protein containing a sequence corresponding to amino acids 100-180 of human CABP7 (NP\_872333.1).

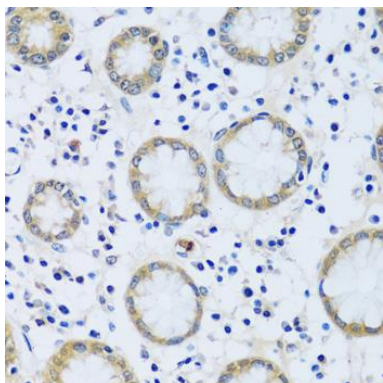
#### Storage:

Store at -20°C. Avoid freeze / thaw cycles. Buffer: PBS with 0.02% sodium azide, 50% glycerol, pH7.3.

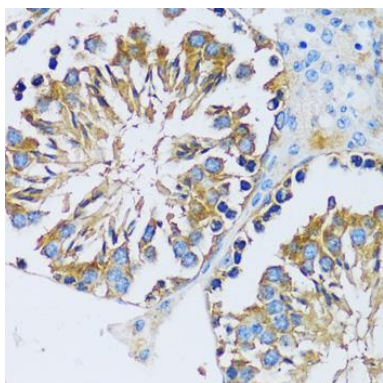
## Product Images



Immunohistochemistry of paraffin-embedded human breast cancer using CABP7 antibody (CAB13703) at dilution of 1:100 (40x lens).



Immunohistochemistry of paraffin-embedded human stomach using CABP7 antibody (CAB13703) at dilution of 1:100 (40x lens).



Immunohistochemistry of paraffin-embedded mouse testis using CABP7 antibody (CAB13703) at dilution of 1:100 (40x lens).