

RND1 Rabbit Polyclonal Antibody



CAB13705

Product Information

Size:

20uL, 50uL, 100uL, 200uL

Observed MW:

26kDa

Calculated MW:

26kDa

Applications:

WB IF

Reactivity:

Mouse, Rat

Protein Background

This gene encodes a protein that belongs to the Rho GTPase family. Members of this family regulate the organization of the actin cytoskeleton in response to extracellular growth factors. A similar protein in rat interacts with a microtubule regulator to control axon extension.

Immunogen information

Gene ID:

27289

Uniprot

Q92730

Synonyms:

RND1; ARHS; RHO6; RHOS

Antibody Information

Recommended dilutions:

WB 1:500 - 1:2000 IF 1:50 - 1:200

Source:

Rabbit

Isotype:

IgG

Purification:

Affinity purification

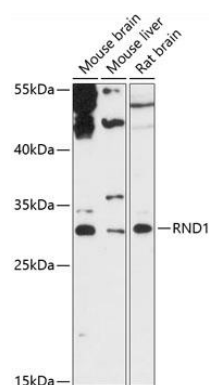
Immunogen:

Recombinant fusion protein containing a sequence corresponding to amino acids 103-232 of human RND1 (NP_055285.1).

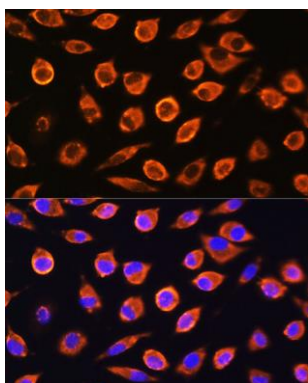
Storage:

Store at -20°C. Avoid freeze / thaw cycles. Buffer: PBS with 0.02% sodium azide, 50% glycerol, pH7.3.

Product Images



Western blot analysis of extracts of various cell lines, using RND1 antibody (CAB13705) at 1:3000 dilution.



Immunofluorescence analysis of L929 cells using RND1 Rabbit pAb (CAB13705) at dilution of 1:100. Blue: DAPI for nuclear staining.