

MDFI Rabbit Polyclonal Antibody



CAB13709

Product Information

Size:

20uL, 50uL, 100uL, 200uL

Observed MW:

35kDa

Calculated MW:

25kDa

Applications:

WB IF

Reactivity:

Human, Mouse, Rat

Protein Background

This protein is a transcription factor that negatively regulates other myogenic family proteins. Studies of the mouse homolog, I-mf, show that it interferes with myogenic factor function by masking nuclear localization signals and preventing DNA binding. Knockout mouse studies show defects in the formation of vertebrae and ribs that also involve cartilage formation in these structures.

Immunogen information

Gene ID:

4188

Uniprot

Q99750

Synonyms:

MDFI; I-MF; I-mfa

Antibody Information

Recommended dilutions:

WB 1:500 - 1:2000 IF 1:50 - 1:200

Source:

Rabbit

Isotype:

IgG

Purification:

Affinity purification

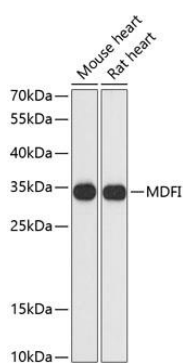
Immunogen:

Recombinant fusion protein containing a sequence corresponding to amino acids 1-160 of human MDFI (NP_005577.1).

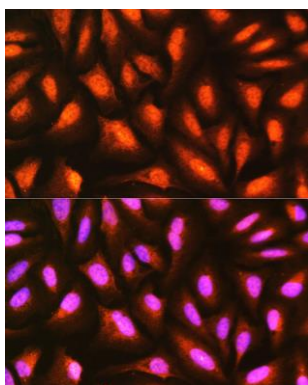
Storage:

Store at -20°C. Avoid freeze / thaw cycles. Buffer: PBS with 0.02% sodium azide, 50% glycerol, pH7.3.

Product Images



Western blot analysis of extracts of various cell lines, using MDFI antibody (CAB13709) at 1:3000 dilution.



Immunofluorescence analysis of U-2 OS cells using MDFI Rabbit pAb (CAB13709) at dilution of 1:100 (40x lens). Blue: DAPI for nuclear staining.