

LIME1 Rabbit Polyclonal Antibody



CAB13719

Product Information

Size:

20uL, 50uL, 100uL, 200uL

Observed MW:

31kDa-35kDa

Calculated MW:

20kDa/31kDa

Applications:

WB

Reactivity:

Human, Mouse

Protein Background

This gene encodes a transmembrane adaptor protein that links the T and B-cell receptor stimulation to downstream signaling pathways via its association with the Src family kinases Lck and Lyn, respectively. Alternative splicing of this gene results in multiple transcript variants.

Immunogen information

Gene ID:

54923

Uniprot

Q9H400

Synonyms:

LIME1; LIME; dJ583P15.4

Antibody Information

Recommended dilutions:

WB 1:500 - 1:2000

Source:

Rabbit

Isotype:

IgG

Purification:

Affinity purification

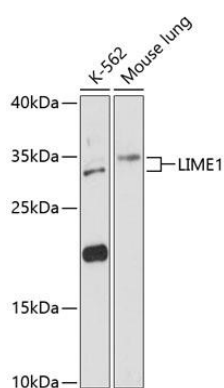
Immunogen:

Recombinant fusion protein containing a sequence corresponding to amino acids 1-295 of human LIME1 (NP_060276.2).

Storage:

Store at -20°C. Avoid freeze / thaw cycles. Buffer: PBS with 0.02% sodium azide, 50% glycerol, pH7.3.

Product Images



Western blot analysis of extracts of various cell lines, using LIME1 antibody (CAB13719) at 1:3000 dilution. Secondary antibody: HRP Goat Anti-Rabbit IgG (H+L) (CABS014) at 1:10000 dilution. Lysates/proteins: 25ug per lane. Blocking buffer: 3% nonfat dry milk in TBST. Detection: ECL Basic Kit (CABM00020). Exposure time: 90s.