

CAMLG Rabbit Polyclonal Antibody



CAB13720

Product Information

Size:

20uL, 50uL, 100uL, 200uL

Observed MW:

38kDa

Calculated MW:

32kDa

Applications:

WB IHC IF

Reactivity:

Human, Mouse, Rat

Protein Background

The immunosuppressant drug cyclosporin A blocks a calcium-dependent signal from the T-cell receptor (TCR) that normally leads to T-cell activation. When bound to cyclophilin B, cyclosporin A binds and inactivates the key signaling intermediate calcineurin. The protein encoded by this gene functions similarly to cyclosporin A, binding to cyclophilin B and acting downstream of the TCR and upstream of calcineurin by causing an influx of calcium. This integral membrane protein appears to be a new participant in the calcium signal transduction pathway, implicating cyclophilin B in calcium signaling, even in the absence of cyclosporin.

Immunogen information

Gene ID:

819

Uniprot

P49069

Synonyms:

CAMLG; CAML; GET2

Antibody Information

Recommended dilutions:

WB 1:500 - 1:2000 IHC 1:50
- 1:100 IF 1:50 - 1:200

Source:

Rabbit

Isotype:

IgG

Purification:

Affinity purification

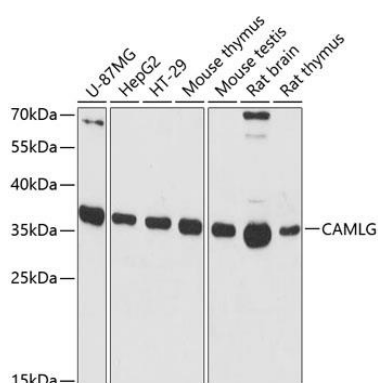
Immunogen:

Recombinant fusion protein containing a sequence corresponding to amino acids 1-190 of human CAMLG (NP_001736.1).

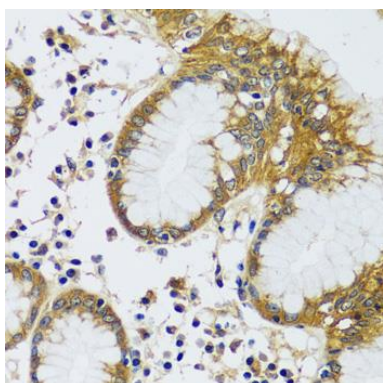
Storage:

Store at -20°C. Avoid freeze / thaw cycles. Buffer: PBS with 0.02% sodium azide, 50% glycerol, pH7.3.

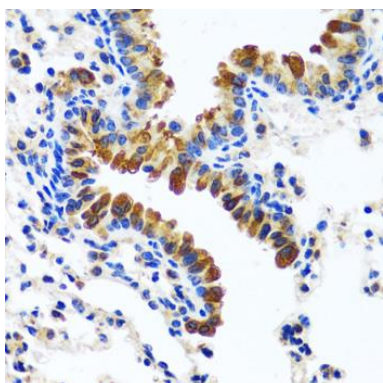
Product Images



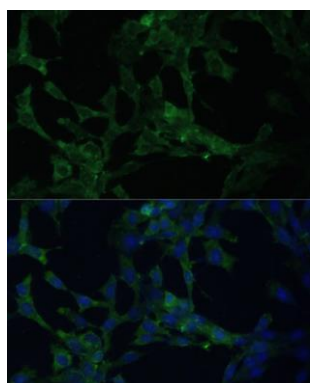
Western blot analysis of extracts of various cell lines, using CAMLG antibody (CAB13720) at 1:3000 dilution. Secondary antibody: HRP Goat Anti-Rabbit IgG (H+L) (CABS014) at 1:10000 dilution. Lysates/proteins: 25ug per lane. Blocking buffer: 3% nonfat dry milk in TBST. Detection: ECL Basic Kit (CABM00020). Exposure time: 90s.



Immunohistochemistry of paraffin-embedded human stomach using CAMLG antibody (CAB13720) at dilution of 1:100 (40x lens).



Immunohistochemistry of paraffin-embedded mouse lung using CAMLG antibody (CAB13720) at dilution of 1:100 (40x lens).



Immunofluorescence analysis of NIH-3T3 cells using CAMLG Polyclonal Antibody (CAB13720) at dilution of 1:100 (40x lens). Blue: DAPI for nuclear staining.