

# ZNF707 Rabbit Polyclonal Antibody



CAB13737

---

## Product Information

### Size:

20uL, 50uL, 100uL, 200uL

### Observed MW:

Refer to figures

### Calculated MW:

43kDa

### Applications:

WB IHC IF

### Reactivity:

Human, Mouse, Rat

## Antibody Information

### Recommended dilutions:

WB 1:500 - 1:2000 IHC 1:50  
- 1:200 IF 1:50 - 1:200

### Source:

Rabbit

### Isotype:

IgG

### Purification:

Affinity purification

## Protein Background

### Immunogen information

#### Gene ID:

286075

#### Uniprot

Q96C28

#### Synonyms:

ZNF707

#### Immunogen:

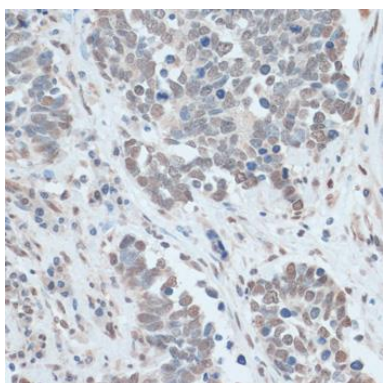
Recombinant fusion protein containing a sequence corresponding to amino acids 50-180 of human ZNF707 (NP\_776192.2).

#### Storage:

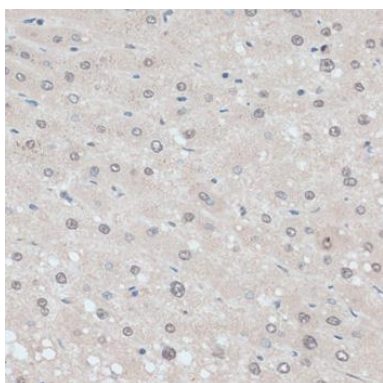
Store at -20°C. Avoid freeze / thaw cycles. Buffer: PBS with 0.02% sodium azide, 50% glycerol, pH7.3.

## Product Images

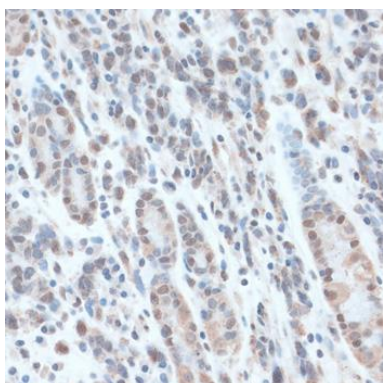
---



Immunohistochemistry of paraffin-embedded human lung cancer using ZNF707 antibody (CAB13737) at dilution of 1:100 (40x lens).



Immunohistochemistry of paraffin-embedded human liver using ZNF707 antibody (CAB13737) at dilution of 1:100 (40x lens).



Immunohistochemistry of paraffin-embedded human gastric cancer using ZNF707 antibody (CAB13737) at dilution of 1:100 (40x lens).