

ADAP2 Rabbit Polyclonal Antibody



CAB13739

Product Information

Size:

20uL, 50uL, 100uL, 200uL

Observed MW:

44kDa

Calculated MW:

44kDa

Applications:

WB

Reactivity:

Human

Protein Background

The protein encoded by this gene binds beta-tubulin and increases the stability of microtubules. The encoded protein can also translocate to the cell membrane and bind phosphatidylinositol 3, 4, 5-trisphosphate (PtdInsP3) and inositol 1, 3, 4, 5-tetrakisphosphate (InsP4). In addition, this protein is a GTPase-activating protein for ADP ribosylation factor 6 and may be able to block the entry of some RNA viruses.

Immunogen information

Gene ID:

55803

Uniprot

Q9NPF8

Synonyms:

ADAP2; CENTA2; HSA272195; cent-b

Antibody Information

Recommended dilutions:

WB 1:500 - 1:2000

Source:

Rabbit

Isotype:

IgG

Purification:

Affinity purification

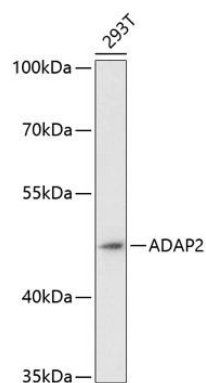
Immunogen:

Recombinant fusion protein containing a sequence corresponding to amino acids 1-381 of human ADAP2 (NP_060874.1).

Storage:

Store at -20°C. Avoid freeze / thaw cycles. Buffer: PBS with 0.02% sodium azide, 50% glycerol, pH7.3.

Product Images



Western blot analysis of extracts of 293T cells, using ADAP2 antibody (CAB13739) at 1:3000 dilution. Secondary antibody: HRP Goat Anti-Rabbit IgG (H+L) (CABS014) at 1:10000 dilution. Lysates/proteins: 25ug per lane. Blocking buffer: 3% nonfat dry milk in TBST. Detection: ECL Enhanced Kit (CABM00021). Exposure time: 90s.