

# SERPINB13 Rabbit Polyclonal Antibody



CAB13744

---

## Product Information

### Size:

20uL, 50uL, 100uL, 200uL

### Observed MW:

44kDa

### Calculated MW:

38kDa/44kDa

### Applications:

WB IHC IF

### Reactivity:

Human, Mouse, Rat

## Protein Background

The protein encoded by this gene is a member of the serpin family of serine protease inhibitors. The encoded protein inhibits the activity of cathepsin K and is itself transcriptionally repressed by RUNX1. This gene is downregulated in many types of cancer.

## Immunogen information

### Gene ID:

5275

### Uniprot

Q9UIV8

### Synonyms:

SERPINB13; HSHUR7SEQ; HUR7; PI13; headpin

## Antibody Information

### Recommended dilutions:

WB 1:500 - 1:2000 IHC 1:50  
- 1:100 IF 1:50 - 1:100

### Source:

Rabbit

### Isotype:

IgG

### Purification:

Affinity purification

### Immunogen:

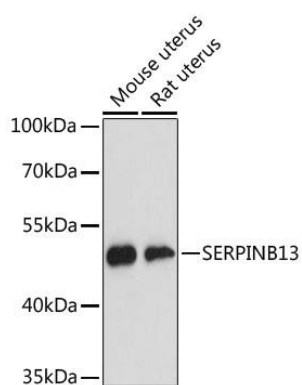
Recombinant fusion protein containing a sequence corresponding to amino acids 1-140 of human SERPINB13 (NP\_036529.1).

### Storage:

Store at -20°C. Avoid freeze / thaw cycles. Buffer: PBS with 0.02% sodium azide, 50% glycerol, pH7.3.

## Product Images

---



Western blot analysis of extracts of various cell lines, using SERPINB13 antibody (CAB13744) at 1:3000 dilution. Secondary antibody: HRP Goat Anti-Rabbit IgG (H+L) (CABS014) at 1:10000 dilution. Lysates/proteins: 25ug per lane. Blocking buffer: 3% nonfat dry milk in TBST. Detection: ECL Basic Kit (CABM00020). Exposure time: 90s.