

# DBNL Rabbit Polyclonal Antibody



CAB13751

---

## Product Information

### Size:

20uL, 50uL, 100uL, 200uL

### Observed MW:

56kDa

### Calculated MW:

37kDa/43kDa/48kDa/49kDa

### Applications:

WB IF

### Reactivity:

Human, Mouse, Rat

## Antibody Information

### Recommended dilutions:

WB 1:500 - 1:2000 IF 1:50 - 1:100

### Source:

Rabbit

### Isotype:

IgG

### Purification:

Affinity purification

## Protein Background

### Immunogen information

#### Gene ID:

28988

#### Uniprot

Q9UJU6

#### Synonyms:

DBNL; ABP1; HIP-55; HIP55; SH3P7

#### Immunogen:

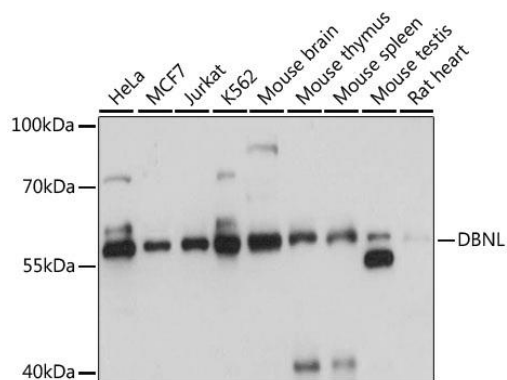
Recombinant fusion protein containing a sequence corresponding to amino acids 131-430 of human DBNL (NP\_001014436.1).

#### Storage:

Store at -20°C. Avoid freeze / thaw cycles. Buffer: PBS with 0.02% sodium azide, 50% glycerol, pH7.3.

## Product Images

---



Western blot analysis of extracts of various cell lines, using DBNL antibody (CAB13751) at 1:3000 dilution. Secondary antibody: HRP Goat Anti-Rabbit IgG (H+L) (CABS014) at 1:10000 dilution. Lysates/proteins: 25ug per lane. Blocking buffer: 3% nonfat dry milk in TBST. Detection: ECL Basic Kit (CABM00020). Exposure time: 1s.