

CMAS Rabbit Polyclonal Antibody



CAB13752

Product Information

Size:

20uL, 50uL, 100uL, 200uL

Observed MW:

48kDa

Calculated MW:

29kDa/48kDa

Applications:

WB IHC

Reactivity:

Human, Mouse, Rat

Protein Background

This gene encodes an enzyme that converts N-acetylneuraminic acid (NeuNAc) to cytidine 5'-monophosphate N-acetylneuraminic acid (CMP-NeuNAc). This process is important in the formation of sialylated glycoprotein and glycolipids. This modification plays a role in cell-cell communications and immune responses. Alternative splicing results in multiple transcript variants.

Immunogen information

Gene ID:

55907

Uniprot

Q8NFW8

Synonyms:

CMAS; CSS

Antibody Information

Recommended dilutions:

WB 1:500 - 1:2000 IHC 1:50 - 1:200

Source:

Rabbit

Isotype:

IgG

Purification:

Affinity purification

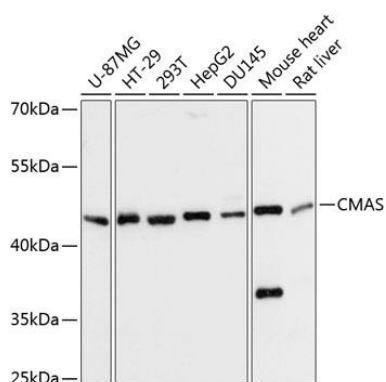
Immunogen:

Recombinant fusion protein containing a sequence corresponding to amino acids 1-263 of human CMAS (NP_061156.1).

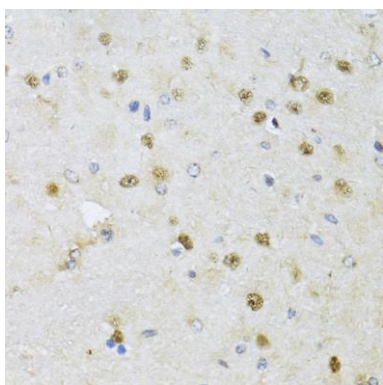
Storage:

Store at -20°C. Avoid freeze / thaw cycles. Buffer: PBS with 0.02% sodium azide, 50% glycerol, pH7.3.

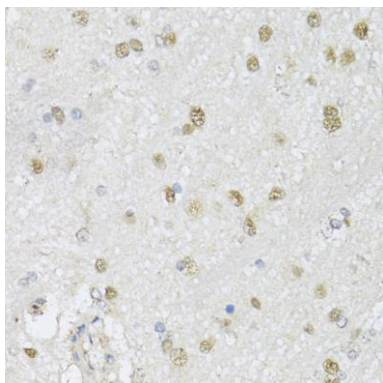
Product Images



Western blot analysis of extracts of various cell lines, using CMAS Antibody (CAB13752) at 1:3000 dilution. Secondary antibody: HRP Goat Anti-Rabbit IgG (H+L) (CABS014) at 1:10000 dilution. Lysates/proteins: 25ug per lane. Blocking buffer: 3% nonfat dry milk in TBST. Detection: ECL Basic Kit (CABM00020). Exposure time: 10s.



Immunohistochemistry of paraffin-embedded rat brain using CMAS antibody (CAB13752) at dilution of 1:150 (40x lens).



Immunohistochemistry of paraffin-embedded mouse brain using CMAS antibody (CAB13752) at dilution of 1:150 (40x lens).