

# KRT36 Rabbit Polyclonal Antibody



CAB13759

## Product Information

### Size:

20uL, 50uL, 100uL, 200uL

### Observed MW:

52kDa

### Calculated MW:

47kDa/52kDa

### Applications:

WB IHC

### Reactivity:

Human, Rat

## Protein Background

The protein encoded by this gene is a member of the keratin gene family. This type I hair keratin is an acidic protein which heterodimerizes with type II keratins to form hair and nails. The type I hair keratins are clustered in a region of chromosome 17q12-q21 and have the same direction of transcription.

## Immunogen information

### Gene ID:

8689

### Uniprot

O76013

### Synonyms:

KRT36; HA6; KRTHA6; hHa6

## Antibody Information

### Recommended dilutions:

WB 1:500 - 1:2000 IHC 1:50  
- 1:200

### Source:

Rabbit

### Isotype:

IgG

### Purification:

Affinity purification

### Immunogen:

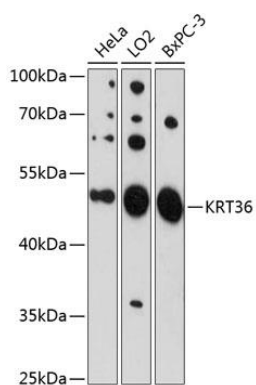
Recombinant fusion protein containing a sequence corresponding to amino acids 388-467 of human KRT36 (NP\_003762.1).

### Storage:

Store at -20°C. Avoid freeze / thaw cycles. Buffer: PBS with 0.02% sodium azide, 50% glycerol, pH7.3.

## Product Images

---



Western blot analysis of extracts of various cell lines, using KRT36 antibody (CAB13759) at 1:3000 dilution. Secondary antibody: HRP Goat Anti-Rabbit IgG (H+L) (CABS014) at 1:10000 dilution. Lysates/proteins: 25ug per lane. Blocking buffer: 3% nonfat dry milk in TBST. Detection: ECL Basic Kit (CABM00020). Exposure time: 90s.