

HSF1 Rabbit Polyclonal Antibody



CAB13765

Product Information

Size:

20uL, 50uL, 100uL, 200uL

Observed MW:

90kDa

Calculated MW:

52kDa/57kDa

Applications:

WB IHC IF

Reactivity:

Human, Mouse, Rat

Protein Background

The product of this gene is a heat-shock transcription factor. Transcription of heat-shock genes is rapidly induced after temperature stress. Hsp90, by itself and/or associated with multichaperone complexes, is a major repressor of this gene.

Immunogen information

Gene ID:

3297

Uniprot

Q00613

Synonyms:

HSF1; HSTF1

Antibody Information

Recommended dilutions:

WB 1:500 - 1:2000 IHC 1:50
- 1:100 IF 1:50 - 1:100

Source:

Rabbit

Isotype:

IgG

Purification:

Affinity purification

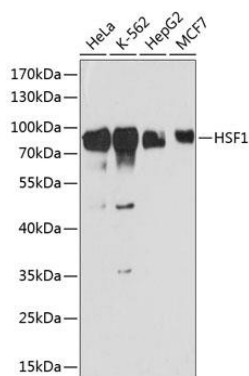
Immunogen:

Recombinant fusion protein containing a sequence corresponding to amino acids 350-529 of human HSF1 (NP_005517.1).

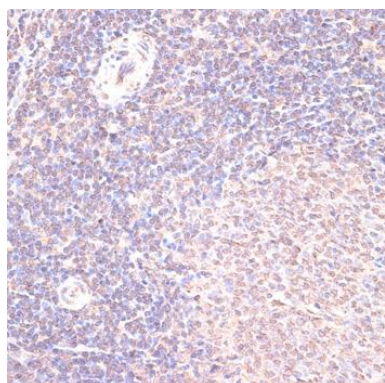
Storage:

Store at -20°C. Avoid freeze / thaw cycles. Buffer: PBS with 0.02% sodium azide, 50% glycerol, pH7.3.

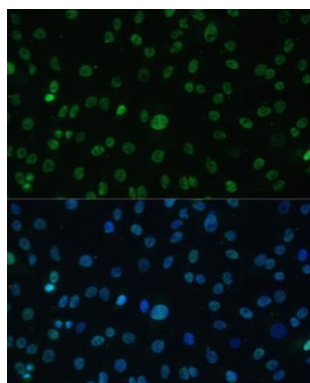
Product Images



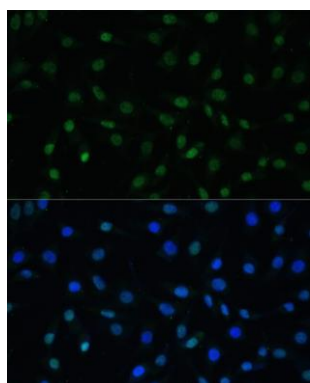
Western blot analysis of extracts of various cell lines, using HSF1 antibody (CAB13765) at 1:3000 dilution. Secondary antibody: HRP Goat Anti-Rabbit IgG (H+L) (CABS014) at 1:10000 dilution. Lysates/proteins: 25ug per lane. Blocking buffer: 3% nonfat dry milk in TBST. Detection: ECL Basic Kit (CABM00020). Exposure time: 90s.



Immunohistochemistry of paraffin-embedded rat spleen using HSF1 antibody (CAB13765) at dilution of 1:100 (40x lens).



Immunofluorescence analysis of C6 cells using HSF1 antibody (CAB13765) at dilution of 1:100. Blue: DAPI for nuclear staining.



Immunofluorescence analysis of L929 cells using HSF1 antibody (CAB13765) at dilution of 1:100. Blue: DAPI for nuclear staining.