

ZNF12 Rabbit Polyclonal Antibody



CAB13783

Product Information

Size:

20uL, 50uL, 100uL, 200uL

Observed MW:

81kDa

Calculated MW:

54kDa/58kDa/72kDa/77kDa/
81kDa

Applications:

WB IHC

Reactivity:

Mouse, Rat

Antibody Information

Recommended dilutions:

WB 1:500 - 1:2000 IHC 1:50
- 1:200

Source:

Rabbit

Isotype:

IgG

Purification:

Affinity purification

Protein Background

This gene is a member of the krueppel C2H2-type zinc-finger protein family and encodes a protein with eight C2H2-type zinc fingers and a KRAB domain. This nuclear protein is involved in developmental control of gene expression. Alternate transcriptional splice variants, encoding different isoforms, have been characterized.

Immunogen information

Gene ID:

7559

Uniprot

P17014

Synonyms:

ZNF12; GIOT-3; HZF11; KOX3; ZNF325

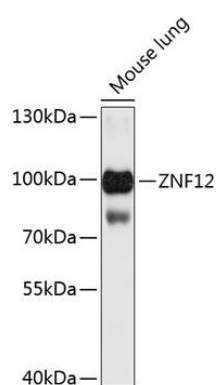
Immunogen:

Recombinant fusion protein containing a sequence corresponding to amino acids 70-240 of human ZNF12 (NP_057349.2).

Storage:

Store at -20°C. Avoid freeze / thaw cycles. Buffer: PBS with 0.02% sodium azide, 50% glycerol, pH7.3.

Product Images



Western blot analysis of extracts of mouse kidney, using ZNF12 Antibody (CAB13783) at 1:3000 dilution. Secondary antibody: HRP Goat Anti-Rabbit IgG (H+L) (CABS014) at 1:10000 dilution. Lysates/proteins: 25ug per lane. Blocking buffer: 3% nonfat dry milk in TBST. Detection: ECL Basic Kit (CABM00020). Exposure time: 30s.