

RIN2 Rabbit Polyclonal Antibody



CAB13798

Product Information

Size:

20uL, 50uL, 100uL, 200uL

Observed MW:

120kDa

Calculated MW:

100kDa/105kDa

Applications:

WB

Reactivity:

Human, Mouse

Antibody Information

Recommended dilutions:

WB 1:500 - 1:2000

Source:

Rabbit

Isotype:

IgG

Purification:

Affinity purification

Protein Background

The RAB5 protein is a small GTPase involved in membrane trafficking in the early endocytic pathway. The protein encoded by this gene binds the GTP-bound form of the RAB5 protein preferentially over the GDP-bound form, and functions as a guanine nucleotide exchange factor for RAB5. The encoded protein is found primarily as a tetramer in the cytoplasm and does not bind other members of the RAB family. Mutations in this gene cause macrocephaly alopecia cutis laxa and scoliosis (MACS) syndrome, an elastic tissue disorder, as well as the related connective tissue disorder, RIN2 syndrome. Alternative splicing results in multiple transcript variants.

Immunogen information

Gene ID:

54453

Uniprot

Q8WYP3

Synonyms:

RIN2; MACS; RASSF4

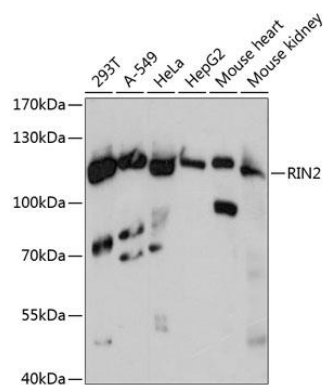
Immunogen:

Recombinant fusion protein containing a sequence corresponding to amino acids 596-895 of human RIN2 (NP_061866.1).

Storage:

Store at -20°C. Avoid freeze / thaw cycles. Buffer: PBS with 0.02% sodium azide, 50% glycerol, pH7.3.

Product Images



Western blot analysis of extracts of various cell lines, using RIN2 antibody (CAB13798) at 1:3000 dilution. Secondary antibody: HRP Goat Anti-Rabbit IgG (H+L) (CABS014) at 1:10000 dilution. Lysates/proteins: 25ug per lane. Blocking buffer: 3% nonfat dry milk in TBST. Detection: ECL Basic Kit (CABM00020). Exposure time: 30s.