

# KIF5C Rabbit Polyclonal Antibody



CAB13801

---

## Product Information

### Size:

20uL, 50uL, 100uL, 200uL

### Observed MW:

109kDa

### Calculated MW:

83kDa/109kDa

### Applications:

WB

### Reactivity:

Human

## Antibody Information

### Recommended dilutions:

WB 1:500 - 1:2000

### Source:

Rabbit

### Isotype:

IgG

### Purification:

Affinity purification

## Protein Background

The protein encoded by this gene is a kinesin heavy chain subunit involved in the transport of cargo within the central nervous system. The encoded protein, which acts as a tetramer by associating with another heavy chain and two light chains, interacts with protein kinase CK2. Mutations in this gene have been associated with complex cortical dysplasia with other brain malformations-2. Two transcript variants, one protein-coding and the other non-protein coding, have been found for this gene.

## Immunogen information

### Gene ID:

3800

### Uniprot

O60282

### Synonyms:

KIF5C; CDCBM2; KINN; NKHC; NKHC-2; NKHC2

### Immunogen:

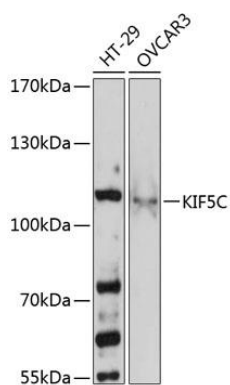
Recombinant fusion protein containing a sequence corresponding to amino acids 510-590 of human KIF5C (NP\_004513.1).

### Storage:

Store at -20°C. Avoid freeze / thaw cycles. Buffer: PBS with 0.02% sodium azide, 50% glycerol, pH7.3.

## Product Images

---



Western blot analysis of extracts of various cell lines, using KIF5C antibody (CAB13801) at 1:3000 dilution. Secondary antibody: HRP Goat Anti-Rabbit IgG (H+L) (CABS014) at 1:10000 dilution. Lysates/proteins: 25ug per lane. Blocking buffer: 3% nonfat dry milk in TBST. Detection: ECL Basic Kit (CABM00020). Exposure time: 10s.