

# FCRL5 Rabbit Polyclonal Antibody



CAB13803

---

## Product Information

### Size:

20uL, 50uL, 100uL, 200uL

### Observed MW:

106kDa

### Calculated MW:

14kDa/17kDa/65kDa/83kDa/  
106kDa

### Applications:

WB

### Reactivity:

Human, Mouse, Rat

## Antibody Information

### Recommended dilutions:

WB 1:500 - 1:2000

### Source:

Rabbit

### Isotype:

IgG

### Purification:

Affinity purification

## Protein Background

This gene encodes a member of the immunoglobulin receptor superfamily and the Fc-receptor like family. This gene and several other Fc receptor-like gene members are clustered on the long arm of chromosome 1. The encoded protein is a single-pass type I membrane protein and contains 8 immunoglobulin-like C2-type domains. This gene is implicated in B cell development and lymphomagenesis. Alternatively spliced transcript variants encoding different isoforms have been identified.

## Immunogen information

### Gene ID:

83416

### Uniprot

Q96RD9

### Synonyms:

FCRL5; BXMAS1; CD307; CD307e; FCRH5; IRTA2; PRO820

### Immunogen:

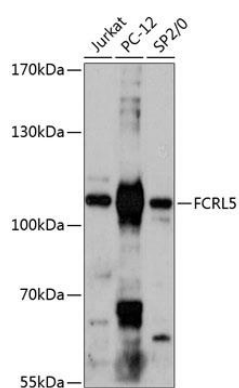
Recombinant fusion protein containing a sequence corresponding to amino acids 16-190 of human FCRL5 (NP\_001182317.1).

### Storage:

Store at -20°C. Avoid freeze / thaw cycles. Buffer: PBS with 0.02% sodium azide, 50% glycerol, pH7.3.

## Product Images

---



Western blot analysis of extracts of various cell lines, using FCRL5 antibody (CAB13803) at 1:3000 dilution. Secondary antibody: HRP Goat Anti-Rabbit IgG (H+L) (CABS014) at 1:10000 dilution. Lysates/proteins: 25ug per lane. Blocking buffer: 3% nonfat dry milk in TBST. Detection: ECL Basic Kit (CABM00020). Exposure time: 90s.