

RPS6KC1 Rabbit Polyclonal Antibody



CAB13807

Product Information

Size:

20uL, 50uL, 100uL, 200uL

Observed MW:

120kDa

Calculated MW:

117kDa/118kDa

Applications:

WB

Reactivity:

Human

Antibody Information

Recommended dilutions:

WB 1:500 - 1:2000

Source:

Rabbit

Isotype:

IgG

Purification:

Affinity purification

Protein Background

Immunogen information

Gene ID:

26750

Uniprot

Q96S38

Synonyms:

RPS6KC1; RPK118; RSKL1; S6K-delta-1; S6PKh1; humS6PKh1

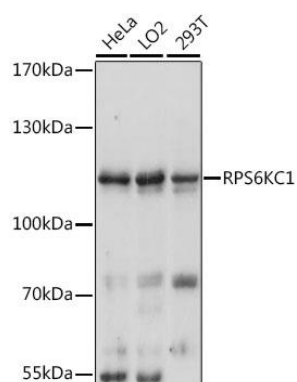
Immunogen:

Recombinant fusion protein containing a sequence corresponding to amino acids 200-400 of human RPS6KC1 (NP_036556.2).

Storage:

Store at -20°C. Avoid freeze / thaw cycles. Buffer: PBS with 0.02% sodium azide, 50% glycerol, pH7.3.

Product Images



Western blot analysis of extracts of various cell lines, using RPS6KC1 antibody (CAB13807) at 1:3000 dilution. Secondary antibody: HRP Goat Anti-Rabbit IgG (H+L) (CABS014) at 1:10000 dilution. Lysates/proteins: 25ug per lane. Blocking buffer: 3% nonfat dry milk in TBST. Detection: ECL Basic Kit (CABM00020). Exposure time: 10s.