

AP3B2 Rabbit Polyclonal Antibody



CAB13808

Product Information

Size:

20uL, 50uL, 100uL, 200uL

Observed MW:

130kDa

Calculated MW:

15kDa/115kDa/119kDa/121kDa

Applications:

WB

Reactivity:

Human, Mouse, Rat

Antibody Information

Recommended dilutions:

WB 1:500 - 1:2000

Source:

Rabbit

Isotype:

IgG

Purification:

Affinity purification

Protein Background

Adaptor protein complex 3 (AP-3 complex) is a heterotrimeric protein complex involved in the formation of clathrin-coated synaptic vesicles. The protein encoded by this gene represents the beta subunit of the neuron-specific AP-3 complex and was first identified as the target antigen in human paraneoplastic neurologic disorders. The encoded subunit binds clathrin and is phosphorylated by a casein kinase-like protein, which mediates synaptic vesicle coat assembly. Defects in this gene are a cause of early-onset epileptic encephalopathy.

Immunogen information

Gene ID:

8120

Uniprot

Q13367

Synonyms:

AP3B2; EIEE48; NAPT8

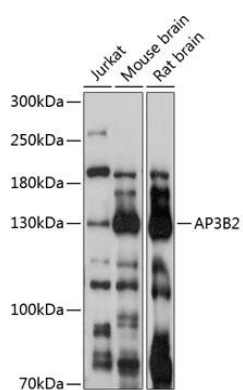
Immunogen:

Recombinant fusion protein containing a sequence corresponding to amino acids 833-1082 of human AP3B2 (NP_004635.2).

Storage:

Store at -20°C. Avoid freeze / thaw cycles. Buffer: PBS with 0.02% sodium azide, 50% glycerol, pH7.3.

Product Images



Western blot analysis of extracts of various cell lines, using AP3B2 antibody (CAB13808) at 1:3000 dilution. Secondary antibody: HRP Goat Anti-Rabbit IgG (H+L) (CABS014) at 1:10000 dilution. Lysates/proteins: 25ug per lane. Blocking buffer: 3% nonfat dry milk in TBST. Detection: ECL Basic Kit (CABM00020). Exposure time: 60s.