

# GCC2 Rabbit Polyclonal Antibody



CAB13814

## Product Information

### Size:

20uL, 50uL, 100uL, 200uL

### Observed MW:

196kDa

### Calculated MW:

5kDa/195kDa

### Applications:

WB IHC

### Reactivity:

Human, Mouse

## Protein Background

The protein encoded by this gene is a peripheral membrane protein localized to the trans-Golgi network. It is sensitive to brefeldin A. This encoded protein contains a GRIP domain which is thought to be used in targeting. Alternative splicing results in multiple transcript variants.

## Immunogen information

### Gene ID:

9648

### Uniprot

Q8IWJ2

### Synonyms:

GCC2; GCC185; RANBP2L4; REN53

## Antibody Information

### Recommended dilutions:

WB 1:500 - 1:2000 IHC 1:50  
- 1:200

### Source:

Rabbit

### Isotype:

IgG

### Purification:

Affinity purification

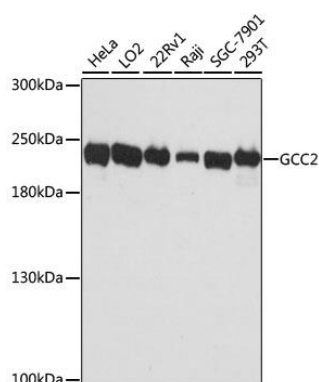
### Immunogen:

Recombinant fusion protein containing a sequence corresponding to amino acids 1-300 of human GCC2 (NP\_852118.1).

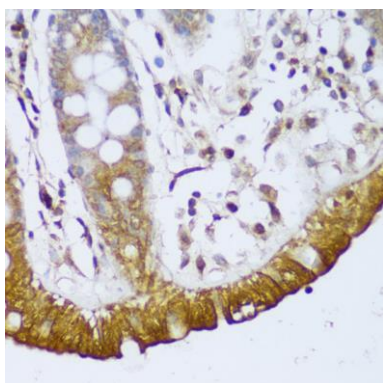
### Storage:

Store at -20°C. Avoid freeze / thaw cycles. Buffer: PBS with 0.02% sodium azide, 50% glycerol, pH7.3.

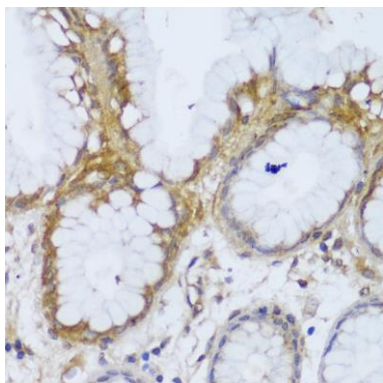
## Product Images



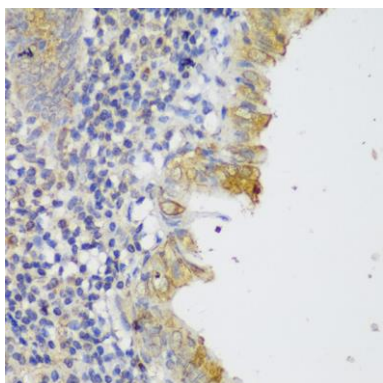
Western blot analysis of extracts of various cell lines, using GCC2 antibody (CAB13814) at 1:3000 dilution. Secondary antibody: HRP Goat Anti-Rabbit IgG (H+L) (CABS014) at 1:10000 dilution. Lysates/proteins: 25ug per lane. Blocking buffer: 3% nonfat dry milk in TBST. Detection: ECL Basic Kit (CABM00020). Exposure time: 90s.



Immunohistochemistry of paraffin-embedded human colon using GCC2 antibody (CAB13814) at dilution of 1:150 (40x lens).



Immunohistochemistry of paraffin-embedded human stomach using GCC2 antibody (CAB13814) at dilution of 1:150 (40x lens).



Immunohistochemistry of paraffin-embedded human appendix using GCC2 antibody (CAB13814) at dilution of 1:150 (40x lens).