

PSME4 Rabbit Polyclonal Antibody



CAB13815

Product Information

Size:

20uL, 50uL, 100uL, 200uL

Observed MW:

211kDa

Calculated MW:

24kDa/113kDa/139kDa/211kDa

Applications:

WB IHC

Reactivity:

Human, Mouse, Rat

Antibody Information

Recommended dilutions:

WB 1:500 - 1:2000 IHC 1:50 - 1:200

Source:

Rabbit

Isotype:

IgG

Purification:

Affinity purification

Protein Background

Immunogen information

Gene ID:

23198

Uniprot

Q14997

Synonyms:

PSME4; PA200

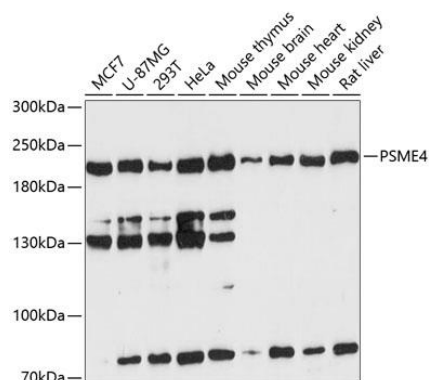
Immunogen:

Recombinant fusion protein containing a sequence corresponding to amino acids 1634-1843 of human PSME4 (NP_055429.2).

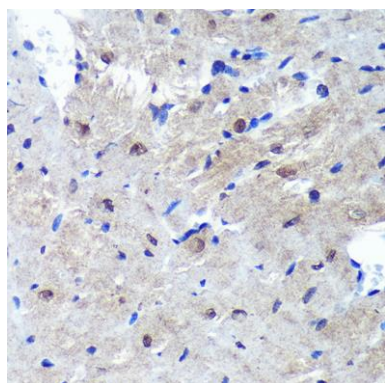
Storage:

Store at -20°C. Avoid freeze / thaw cycles. Buffer: PBS with 0.02% sodium azide, 50% glycerol, pH7.3.

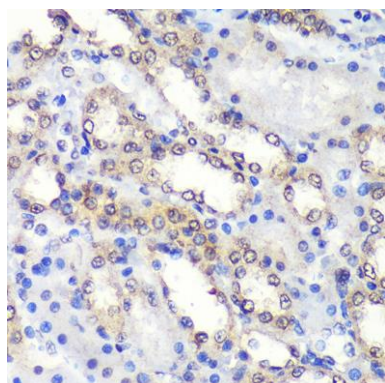
Product Images



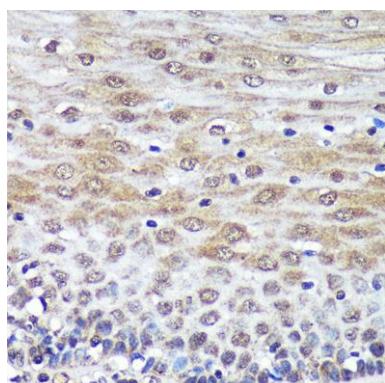
Western blot analysis of extracts of various cell lines, using PSME4 antibody (CAB13815) at 1:3000 dilution. Secondary antibody: HRP Goat Anti-Rabbit IgG (H+L) (CABS014) at 1:10000 dilution. Lysates/proteins: 25ug per lane. Blocking buffer: 3% nonfat dry milk in TBST. Detection: ECL Enhanced Kit (CABM00021). Exposure time: 90s.



Immunohistochemistry of paraffin-embedded Mouse heart using PSME4 Rabbit pAb (CAB13815) at dilution of 1:100 (40x lens).



Immunohistochemistry of paraffin-embedded Rat kidney using PSME4 Rabbit pAb (CAB13815) at dilution of 1:100 (40x lens).



Immunohistochemistry of paraffin-embedded Human esophageal using PSME4 Rabbit pAb (CAB13815) at dilution of 1:100 (40x lens).