

DLGAP2 Rabbit Polyclonal Antibody



CAB13818

Product Information

Size:

20uL, 50uL, 100uL, 200uL

Observed MW:

117kDa

Calculated MW:

108kDa/115kDa/117kDa

Applications:

WB

Reactivity:

Human

Protein Background

The product of this gene is a membrane-associated protein that may play a role in synapse organization and signalling in neuronal cells. This gene is biallelically expressed in the brain, however, only the paternal allele is expressed in the testis (PMID:18055845). Alternatively spliced transcript variants encoding different isoforms have been identified.

Immunogen information

Gene ID:

9228

Uniprot

Q9P1A6

Synonyms:

DLGAP2; C8orf68; DAP2; ERICH1-AS1; SAPAP2

Antibody Information

Recommended dilutions:

WB 1:500 - 1:2000

Source:

Rabbit

Isotype:

IgG

Purification:

Affinity purification

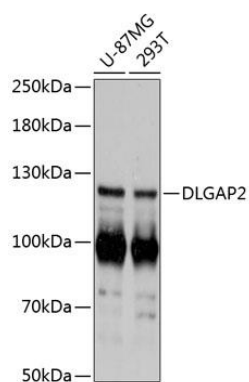
Immunogen:

Recombinant fusion protein containing a sequence corresponding to amino acids 550-800 of human DLGAP2 (NP_004736.2).

Storage:

Store at -20°C. Avoid freeze / thaw cycles. Buffer: PBS with 0.02% sodium azide, 50% glycerol, pH7.3.

Product Images



Western blot analysis of extracts of various cell lines, using DLGAP2 antibody (CAB13818) at 1:3000 dilution. Secondary antibody: HRP Goat Anti-Rabbit IgG (H+L) (CABS014) at 1:10000 dilution. Lysates/proteins: 25ug per lane. Blocking buffer: 3% nonfat dry milk in TBST. Detection: ECL Basic Kit (CABM00020). Exposure time: 1s.