

# APOL3 Rabbit Polyclonal Antibody



CAB13840

## Product Information

### Size:

20uL, 50uL, 100uL, 200uL

### Observed MW:

38kDa

### Calculated MW:

21kDa/36kDa/44kDa

### Applications:

WB

### Reactivity:

Human, Mouse

## Antibody Information

### Recommended dilutions:

WB 1:500 - 1:2000

### Source:

Rabbit

### Isotype:

IgG

### Purification:

Affinity purification

## Protein Background

This gene is a member of the apolipoprotein L gene family, and it is present in a cluster with other family members on chromosome 22. The encoded protein is found in the cytoplasm, where it may affect the movement of lipids, including cholesterol, and/or allow the binding of lipids to organelles. In addition, expression of this gene is up-regulated by tumor necrosis factor-alpha in endothelial cells lining the normal and atherosclerotic iliac artery and aorta. Alternative splicing results in multiple transcript variants.

## Immunogen information

### Gene ID:

80833

### Uniprot

O95236

### Synonyms:

APOL3; APOLIII; CG121; CG12\_1; apoL-III

### Immunogen:

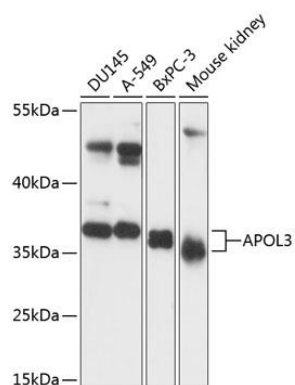
Recombinant fusion protein containing a sequence corresponding to amino acids 1-331 of human APOL3 (NP\_663614.1).

### Storage:

Store at -20°C. Avoid freeze / thaw cycles. Buffer: PBS with 0.02% sodium azide, 50% glycerol, pH7.3.

## Product Images

---



Western blot analysis of extracts of various cell lines, using APOL3 antibody (CAB13840) at 1:3000 dilution. Secondary antibody: HRP Goat Anti-Rabbit IgG (H+L) (CABS014) at 1:10000 dilution. Lysates/proteins: 25ug per lane. Blocking buffer: 3% nonfat dry milk in TBST. Detection: ECL Basic Kit (CABM00020). Exposure time: 30s.