

RBM45 Rabbit Polyclonal Antibody



CAB13843

Product Information

Size:

20uL, 50uL, 100uL, 200uL

Observed MW:

52-54kDa

Calculated MW:

37kDa/53kDa

Applications:

WB

Reactivity:

Mouse

Protein Background

This gene encodes a member of the RNA recognition motif (RRM)-type RNA-binding family of proteins. This protein exhibits preferential binding to poly(C) RNA. Initial cloning of this gene found that the rat ortholog was dynamically expressed in the developing rat brain. This protein has been localized to inclusion bodies in the brain and spinal cord of amyotrophic lateral sclerosis and Alzheimer's patients. A pseudogene has been identified on chromosome 8.

Immunogen information

Gene ID:

129831

Uniprot

Q8IUH3

Synonyms:

RBM45; DRB1; RB-1

Antibody Information

Recommended dilutions:

WB 1:500 - 1:2000

Source:

Rabbit

Isotype:

IgG

Purification:

Affinity purification

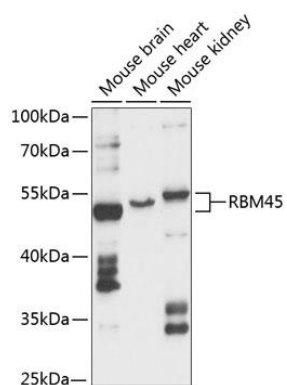
Immunogen:

Recombinant fusion protein containing a sequence corresponding to amino acids 1-300 of human RBM45 (NP_694453.2).

Storage:

Store at -20°C. Avoid freeze / thaw cycles. Buffer: PBS with 0.02% sodium azide, 50% glycerol, pH7.3.

Product Images



Western blot analysis of extracts of various cell lines, using RBM45 antibody (CAB13843) at 1:3000 dilution. Secondary antibody: HRP Goat Anti-Rabbit IgG (H+L) (CABS014) at 1:10000 dilution. Lysates/proteins: 25ug per lane. Blocking buffer: 3% nonfat dry milk in TBST. Detection: ECL Basic Kit (CABM00020). Exposure time: 10s.