

CPT1C Rabbit Polyclonal Antibody



CAB13849

Product Information

Size:

20uL, 50uL, 100uL, 200uL

Observed MW:

91kDa

Calculated MW:

81kDa/89kDa/90kDa

Applications:

WB

Reactivity:

Mouse, Rat

Protein Background

This gene encodes a member of the carnitine/choline acetyltransferase family. The encoded protein regulates the beta-oxidation and transport of long-chain fatty acids into mitochondria, and may play a role in the regulation of feeding behavior and whole-body energy homeostasis. Alternatively spliced transcript variants encoding multiple protein isoforms have been observed for this gene.

Immunogen information

Gene ID:

126129

Uniprot

Q8TCG5

Synonyms:

CPT1C; CATL1; CPT1-B; CPT1P; CPTI-B; CPTIC; SPG73

Antibody Information

Recommended dilutions:

WB 1:500 - 1:2000

Source:

Rabbit

Isotype:

IgG

Purification:

Affinity purification

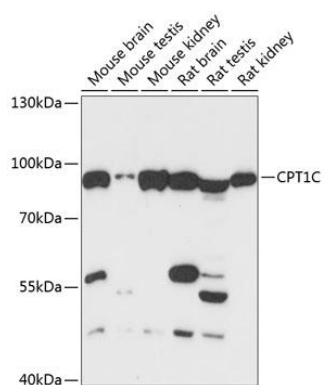
Immunogen:

Recombinant fusion protein containing a sequence corresponding to amino acids 270-400 of human CPT1C (NP_001129524.1).

Storage:

Store at -20°C. Avoid freeze / thaw cycles. Buffer: PBS with 0.02% sodium azide, 50% glycerol, pH7.3.

Product Images



Western blot analysis of extracts of various cell lines, using CPT1C antibody (CAB13849) at 1:3000 dilution. Secondary antibody: HRP Goat Anti-Rabbit IgG (H+L) (CABS014) at 1:10000 dilution. Lysates/proteins: 25ug per lane. Blocking buffer: 3% nonfat dry milk in TBST. Detection: ECL Basic Kit (CABM00020). Exposure time: 30s.