

# CDHR5 Rabbit Polyclonal Antibody



CAB13850

## Product Information

### Size:

20uL, 50uL, 100uL, 200uL

### Observed MW:

88kDa

### Calculated MW:

69kDa/87kDa/88kDa

### Applications:

WB

### Reactivity:

Mouse, Rat

## Protein Background

This gene is a novel mucin-like gene that is a member of the cadherin superfamily. While encoding nonpolymorphic tandem repeats rich in proline, serine and threonine similar to mucin proteins, the gene also contains sequence encoding calcium-binding motifs found in all cadherins. The role of the hybrid extracellular region and the specific function of this protein have not yet been determined. Alternatively spliced transcript variants encoding different isoforms have been described.

## Immunogen information

### Gene ID:

53841

### Uniprot

Q9HBB8

### Synonyms:

CDHR5; MLPCDH; MU-PCDH; MUCDHL; MUPCDH

## Antibody Information

### Recommended dilutions:

WB 1:500 - 1:2000

### Source:

Rabbit

### Isotype:

IgG

### Purification:

Affinity purification

### Immunogen:

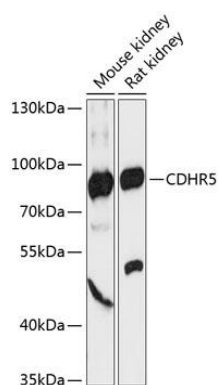
Recombinant fusion protein containing a sequence corresponding to amino acids 26-220 of human CDHR5 (NP\_112554.2).

### Storage:

Store at -20°C. Avoid freeze / thaw cycles. Buffer: PBS with 0.02% sodium azide, 50% glycerol, pH7.3.

## Product Images

---



Western blot analysis of extracts of various cell lines, using CDHR5 antibody (CAB13850) at 1:3000 dilution. Secondary antibody: HRP Goat Anti-Rabbit IgG (H+L) (CABS014) at 1:10000 dilution. Lysates/proteins: 25ug per lane. Blocking buffer: 3% nonfat dry milk in TBST. Detection: ECL Basic Kit (CABM00020). Exposure time: 90s.